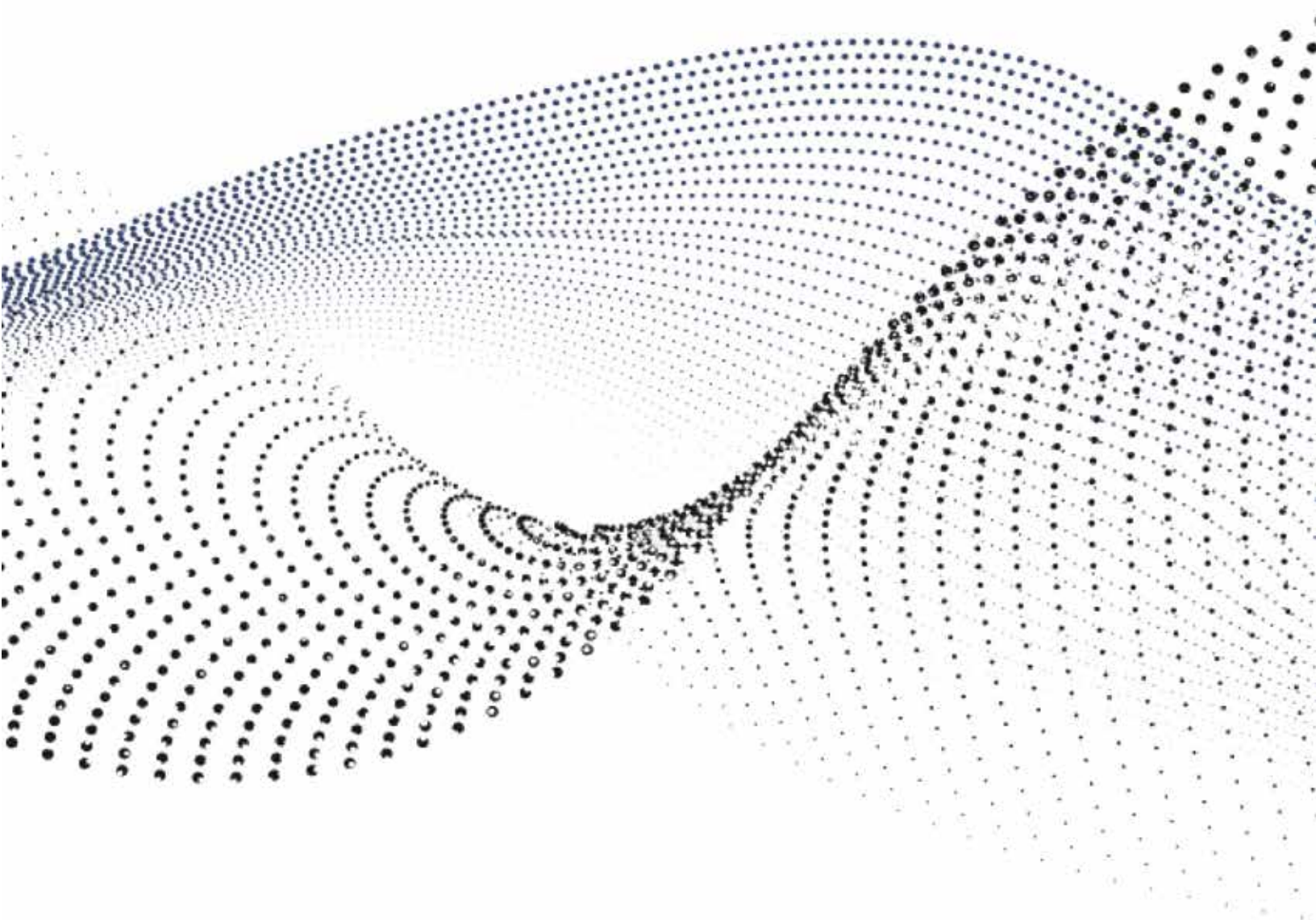


2022 Michigan Annual Conference

Clergy and Lay Equalization



Michigan Conference

The United Methodist Church

Michigan Annual Conference Equalization

Clergy Members to Annual Conference

Clergy Members to the Annual Conference are as defined in ¶¶ 32 and 602 of *The Book of Discipline of the UMC – 2016*. These numbers can be found in the Michigan Annual Conference 2021 Journals using the Business of the Annual Conference, Part II: Pertaining to Ordained and Licensed Clergy, Question 57.

Deacons in Full Connection	56
Elders in Full Connection	858
Provisional Deacons	7
Provisional Elders	42
Associate Members & Affiliate Members with Vote	35
Full-time Local Pastors	130
Part-time Local Pastors	77
Total Clergy	1205

Lay Members to Annual Conference

An equal number of Lay Members are invited to Annual Conference in accordance with ¶¶ 32 and 602 of *The Book of Discipline of the UMC – 2016*. Each Annual Conference determines and approves a process for equalization. The Michigan Conference outlines the process for equalization in the Standing Rules, § 5 Rules of Order, 5.2 Membership. In summary, Lay Members are gathered from local churches/charges, by virtue of their leadership office, or invited by the Board of Laity.

Total Lay Members by Charge	977
Equalization by Office	118
Equalization Invited by the Board of Laity	110
Total Laity	1,205

Office Title or Description	Rule	First Name	Last Name	Clergy / Repeat	Count
Administrative Review Committee, Chair	Standing Rules 5.2.2.23	None	Listed	Clergy	0
Adrian College Representative of Affiliate Agency (Voice Only)	Standing Rules 5.2.4.1				0
Albion College Representative of Affiliate Agency (Voice Only)	Standing Rules 5.2.4.1				0
Annual Conference Coordinator	Standing Rules 5.2.2.3	Nancy	Arnold		1
Annual Conference Trustee	Standing Rules 5.2.2.17	David	Apol		1
Annual Conference Trustee	Standing Rules 5.2.2.17	Jorge	Costales		1
Annual Conference Trustee	Standing Rules 5.2.2.17	Deborah	Federau		1
Annual Conference Trustee	Standing Rules 5.2.2.17	James	LeBaron		1
Annual Conference Trustee	Standing Rules 5.2.2.17	Robert	Long		1
Annual Conference Trustee	Standing Rules 5.2.2.17	Susan	Morgan		1
Area United Methodist Church Historical Society, Inc Representative of Affiliat	Standing Rules 5.2.4.1				0
Associate Director for Congregational Vibrancy	Standing Rules 5.2.2.9	Naomi	Garcia		1
Associate Director for Congregational Vibrancy	Standing Rules 5.2.2.9	Gary	Step	Clergy	0
Associate Director for Lay Leadership Development	Standing Rules 5.2.2.9	Laura	Witkowski		1
Associate Director for Multicultural Vibrancy	Standing Rules 5.2.2.9	Brittney	Stephan	Clergy	0
Associate District Lay Leader: Greater Detroit	¶602.4 Rule 5.2.1.7	Kenneth	Dowell		1
Bay Shore Evangelical Association Representative of Affiliate Agency (Voice O	Standing Rules 5.2.4.1				0
Board of Congregational Life, Chair	Standing Rules 5.2.2.23	Anthony	Hood	Clergy	0
Board of Global Ministries, Chair	Standing Rules 5.2.2.23	Brenda	DuPree		1
Board of Justice, Chair	Standing Rules 5.2.2.23	George	Covintree	Clergy	0
Board of Ordained Ministry, Member	Standing Rules 5.2.2.22	Sharon	Appling		1
Board of Ordained Ministry, Member	Standing Rules 5.2.2.22	Terri	Bentley		1
Board of Ordained Ministry, Member	Standing Rules 5.2.2.22	Ted	Brainard		1
Board of Ordained Ministry, Member	Standing Rules 5.2.2.22	Carol	Hodges		1
Board of Ordained Ministry, Member	Standing Rules 5.2.2.22	Jean	Mackey		1
Board of Ordained Ministry, Member	Standing Rules 5.2.2.22	Laure	Mieskowski		1
Board of Ordained Ministry, Member	Standing Rules 5.2.2.22	Sue	Pung		1
Board of Ordained Ministry, Member	Standing Rules 5.2.2.22	Kelly	Ross		1
Board of Ordained Ministry, Member	Standing Rules 5.2.2.22	Jay	Zylstra		1
Board of Pension and Health Benefits, Chair	Standing Rules 5.2.2.23	Steven	Buck	Clergy	0
Board of Young People's Ministries, Chair	Standing Rules 5.2.2.23	Elizabeth	Hurd	Clergy	0
Bronson Health Group Representative of Affiliate Agency (Voice Only)	Standing Rules 5.2.4.1				0

Clark Retirement Community Representative of Affiliate Agency (Voice Only)	Standing Rules 5.2.4.1				0
Commission on Archives and History, Chair	Standing Rules 5.2.2.23	Mary	Whitman		1
Commission on Communications, Chair	Standing Rules 5.2.2.23	Mark	Doyal		1
Commission on the Annual Conference Session, Member	Standing Rules 5.2.2.20	Don	Archambeau		1
Commission on the Annual Conference Session, Member	Standing Rules 5.2.2.20	Elizabeth	Carr		1
Commission on the Annual Conference Session, Member	Standing Rules 5.2.2.20	Mara	Marsman		1
Commission on the Annual Conference Session, Member	Standing Rules 5.2.2.20	Lisa	Poy		1
Committee on African American Ministry, Co-Chair	Standing Rules 5.2.2.23	Simmie	Proctor		1
Committee on Asian American Ministry, Chair	Standing Rules 5.2.2.23	Jung Eun	Yum	Clergy	0
Committee on Equitable Compensation, Chair	Standing Rules 5.2.2.23	Don	Gotham	Clergy	0
Committee on Hispanic/Latino Ministry, Chair	Standing Rules 5.2.2.23	Rey	Mondragon	Clergy	0
Committee on Human Resources, Chair	Standing Rules 5.2.2.23	Ellen	Zienert	Clergy	0
Committee on Investigation, Chair	Standing Rules 5.2.2.23	None	Listed	Clergy	0
Committee on Native American Ministry, Chair	Standing Rules 5.2.2.23	Ronald	Williamson	Clergy	0
Committee on Nominations, Chair	Standing Rules 5.2.2.23	Melissa	Claxton		1
Committee on Rules, Member	Standing Rules 5.2.2.14	Sue	Buxton		1
Committee on Rules, Member	Standing Rules 5.2.2.14	David	Lundquist		1
Committee on Rules, Member	Standing Rules 5.2.2.14	Tonya	Murphy		1
Committee on Rules, Member	Standing Rules 5.2.2.14	Todd	Price		1
Committee on Rules, Member	Standing Rules 5.2.2.14	Keith	Radek		1
Committee on Rules, Member	Standing Rules 5.2.2.14	James	Searls		1
Committee on Rules, Member	Standing Rules 5.2.2.14	Herbert	Vanderbilt		1
Committee on the Episcopacy, Chair	Standing Rules 5.2.2.10	John	Wharton		1
Committee on the Journal, Member	Standing Rules 5.2.2.21	Blair	Hunt		1
Committee on the Journal, Member	Standing Rules 5.2.2.21	Mandana	Nordbrock		1
Conference Chancellor	Standing Rules 5.2.2.2	Andrew	Vorbich		1
Conference Co-Director of Lay Servant Ministries	¶1602.4 Rule 5.2.1.12	John	Hart		1
Conference Co-Director of Lay Servant Ministries	¶1602.4 Rule 5.2.1.12	Jody	Pratt		1
Conference Facilitator	Standing Rules 5.2.2.19	Jennifer	Peters		1
Conference Lay Leader	¶1602.4 Rule 5.2.1.6	Annette	Erbes		1
Conference Leadership Council, Member	Standing Rules 5.2.2.15	Judy	Coffey		1
Conference Leadership Council, Member	Standing Rules 5.2.2.15	Katja	Falker		1
Conference Leadership Council, Member	Standing Rules 5.2.2.15	Nichea	VerVeer Guy		1
Conference Leadership Council, Member	Standing Rules 5.2.2.15	Sung	Yu		1

Conference Leadership Council, Member	Standing Rules 5.2.2.15	Carmen	Zeigler		1
Conference Parliamentarian	Standing Rules 5.2.2.5	None	Listed		1
Conference Secretary	Standing Rules 5.2.2.1	Joy	Barrett	Clergy	0
Conference Secretary of Global Ministries	¶602.4 Rule 5.2.1.13	None	Listed		1
Conference Statistician	Standing Rules 5.2.2.13	Pamela	Stewart		1
Conference Treasurer	Standing Rules 5.2.2.4	None	Listed		1
Convener of Young Adult Ministries	¶602.4 Rule 5.2.1.9	None	Listed		1
Convener of Youth Ministries	¶602.4 Rule 5.2.1.8	None	Listed		1
Council on Finance & Administration, Member	Standing Rules 5.2.2.16	Jim	Bosserd		1
Council on Finance & Administration, Member	Standing Rules 5.2.2.16	Renaë	Clevenger		1
Council on Finance & Administration, Member	Standing Rules 5.2.2.16	Cameron	DeLong		1
Council on Finance & Administration, Member	Standing Rules 5.2.2.16	Susan	MacGregor		1
Council on Finance & Administration, Member	Standing Rules 5.2.2.16	Clayton	Osborn		1
Council on Finance & Administration, Member	Standing Rules 5.2.2.16	Patrick	Tiedt		1
Council on Finance & Administration, Member	Standing Rules 5.2.2.16	Andrew	Wayne		1
Deaconesses & Home Missioners Under Appointment	¶602.4 Rule 5.2.1.3	Anne	Hillman		1
Deaconesses & Home Missioners Under Appointment	¶602.4 Rule 5.2.1.3	Valerie	Mossman-Celestin		1
Deaconesses & Home Missioners Under Appointment	¶602.4 Rule 5.2.1.3	Amanda	Mountain		1
Deaconesses & Home Missioners Under Appointment	¶602.4 Rule 5.2.1.3	Michelle	White		1
Deaconesses & Home Missioners Under Appointment	¶602.4 Rule 5.2.1.3	William	White		1
Delegate to General or Jurisdictional Conference	Standing Rules 5.2.2.12	Ruby	Anderson		1
Delegate to General or Jurisdictional Conference	Standing Rules 5.2.2.12	Diane	Brown		1
Delegate to General or Jurisdictional Conference	Standing Rules 5.2.2.12	Brenda	DuPree	Repeat	0
Delegate to General or Jurisdictional Conference	Standing Rules 5.2.2.12	Gordon	Grigg III		1
Delegate to General or Jurisdictional Conference	Standing Rules 5.2.2.12	Lisa	Hahn		1
Delegate to General or Jurisdictional Conference	Standing Rules 5.2.2.12	Hoon-Yung	Hopgood		1
Delegate to General or Jurisdictional Conference	Standing Rules 5.2.2.12	Jennifer	Peters	Repeat	0
Delegate to General or Jurisdictional Conference	Standing Rules 5.2.2.12	Ruth	Sutton		1
Delegate to General or Jurisdictional Conference	Standing Rules 5.2.2.12	Nichea	VerVeer Guy	Repeat	0
Delegate to General or Jurisdictional Conference	Standing Rules 5.2.2.12	Laura	Witkowski	Repeat	0
Diaconal Minister	¶602.2 Rule 5.2.1.4	Jane	Case		1
Diaconal Minister	¶602.2 Rule 5.2.1.4	Thelma	Childress		1
Diaconal Minister	¶602.2 Rule 5.2.1.4	Daphna	Flegal		1
Diaconal Minister	¶602.2 Rule 5.2.1.4	Margaret	Foster		1

Diaconal Minister	¶602.2 Rule 5.2.1.4	George	Gish		1
Diaconal Minister	¶602.2 Rule 5.2.1.4	Diane	Griffin		1
Diaconal Minister	¶602.2 Rule 5.2.1.4	Judith	Mayo		1
Diaconal Minister	¶602.2 Rule 5.2.1.4	Matt	Packer		1
Diaconal Minister	¶602.2 Rule 5.2.1.4	Mary	Quick		1
Director for Congregational Vibrancy/Leadership Development	Standing Rules 5.2.2.8	Dirk	Elliott	Clergy	0
Director of Benefits and Human Resources	Standing Rules 5.2.2.8	Don	Emmert	Clergy	0
Director of Clergy Services	Standing Rules 5.2.2.8	Jennifer	Browne	Clergy	0
Director of Communications	Standing Rules 5.2.2.8	Mark	Doyal	Repeat	0
Director of Connectional Ministries	Standing Rules 5.2.2.7	Paul	Perez	Clergy	0
District Co-Lay Leader: East Winds	¶602.4 Rule 5.2.1.7	Bonnie	Potter		1
District Co-Lay Leader: East Winds	¶602.4 Rule 5.2.1.7	Cynthia	Rossmann		1
District Lay Leader: Central Bay	¶602.4 Rule 5.2.1.7	Dennis	Wissinger		1
District Lay Leader: Greater Detroit	¶602.4 Rule 5.2.1.7	Ruby	Anderson	Repeat	0
District Lay Leader: Greater Southwest	¶602.4 Rule 5.2.1.7	Wynne	Hurlbut		1
District Lay Leader: Heritage	¶602.4 Rule 5.2.1.7	John	Seppanen		1
District Lay Leader: Mid-Michigan	¶602.4 Rule 5.2.1.7	Nona	Spackman		1
District Lay Leader: Midwest	¶602.4 Rule 5.2.1.7	Deborah	Hodges		1
District Lay Leader: Northern Skies	¶602.4 Rule 5.2.1.7	John	Preston		1
District Lay Leader: Northern Waters	¶602.4 Rule 5.2.1.7	Denny	Olin		1
Episcopal Residence Committee, Chair	Standing Rules 5.2.2.23	John	Wharton	Repeat	0
Lake Louise Christian Community Representative of Affiliate Agency (Voice Or	Standing Rules 5.2.4.1				0
Legislative Coordinator	Standing Rules 5.2.2.18	Diane	Brown	Repeat	0
Methodist Children's Home Society Representative of Affiliate Agency (Voice Or	Standing Rules 5.2.4.1				0
Michigan Area Loan Funds Representative of Affiliate Agency (Voice Only)	Standing Rules 5.2.4.1				0
Michigan Area United Methodist Camping (MAUMC) Representative of Affilia	Standing Rules 5.2.4.1				0
Persons Serving on General or Jurisdictional Agencies	Standing Rules 5.2.2.11	Jacqueline	Euper		1
Persons Serving on General or Jurisdictional Agencies	Standing Rules 5.2.2.11	Diana	Miller		1
Persons Serving on General or Jurisdictional Agencies	Standing Rules 5.2.2.11	Marchelle	Phelps		1
Persons Serving on General or Jurisdictional Agencies	Standing Rules 5.2.2.11	Linda	Schramm		1
Persons Serving on General or Jurisdictional Agencies	Standing Rules 5.2.2.11	Nichea	VerVeer Guy	Repeat	0
Persons Serving on General or Jurisdictional Agencies	Standing Rules 5.2.2.11	Laura	Witkowski	Repeat	0
Protection Policy Implimentation Team, Chair	Standing Rules 5.2.2.23	Judy	Herriff		1
UMM Conference President	¶602.4 Rule 5.2.1.5	Don	Archambeau	Repeat	0

UMW Conference President	¶1602.4 Rule 5.2.1.5	Julia	Paradine-Rice		1
United Methodist Community House Representative of Affiliate Agency (Voice)	Standing Rules 5.2.4.1				0
United Methodist Foundation of Michigan Representative of Affiliate Agency (Voice)	Standing Rules 5.2.4.1				0
United Methodist Retirement Communities, Inc Representative of Affiliate Agency (Voice)	Standing Rules 5.2.4.1				0
Wesley Foundation Director Central Michigan University	¶1602.e	Audra	Hudson		1
Wesley Foundation Director Ferris State University	¶1602.e	Kim	Bos	Clergy	0
Wesley Foundation Director Grand Valley State University	¶1602.e	Nancy	Janisch	Clergy	0
Wesley Foundation Director Michigan State University	¶1602.e	Jim	Magee		1
Wesley Foundation Director Motor City Ministry	¶1602.e	Carl	Gladstone	Clergy	0
Wesley Foundation Director Northern Michigan University	¶1602.e	Erica	Thomas		1
Wesley Foundation Director Univeristy of Michigan	¶1602.e	Tim	Kobler	Clergy	0
Wesley Foundation Director Western Michigan University	¶1602.e	Jess	Davenport	Clergy	0
Wesley Foundation Director Western Michigan University	¶1602.e	Jeremy	Simpson		1
Young Adult Rep (18-30): Central Bay	¶1602.4 Rule 5.2.1.11	TBD			1
Young Adult Rep (18-30): East Winds	¶1602.4 Rule 5.2.1.11	TBD			1
Young Adult Rep (18-30): Greater Detroit	¶1602.4 Rule 5.2.1.11	TBD			1
Young Adult Rep (18-30): Greater Southwest	¶1602.4 Rule 5.2.1.11	TBD			1
Young Adult Rep (18-30): Heritage	¶1602.4 Rule 5.2.1.11	TBD			1
Young Adult Rep (18-30): Mid-Michigan	¶1602.4 Rule 5.2.1.11	TBD			1
Young Adult Rep (18-30): Midwest	¶1602.4 Rule 5.2.1.11	TBD			1
Young Adult Rep (18-30): Northern Skies	¶1602.4 Rule 5.2.1.11	TBD			1
Young Adult Rep (18-30): Northern Waters	¶1602.4 Rule 5.2.1.11	TBD			1
Youth Representative (12-18): Central Bay	¶1602.4 Rule 5.2.1.10	TBD			1
Youth Representative (12-18): East Winds	¶1602.4 Rule 5.2.1.10	TBD			1
Youth Representative (12-18): Greater Detroit	¶1602.4 Rule 5.2.1.10	TBD			1
Youth Representative (12-18): Greater Southwest	¶1602.4 Rule 5.2.1.10	TBD			1
Youth Representative (12-18): Heritage	¶1602.4 Rule 5.2.1.10	TBD			1
Youth Representative (12-18): Mid-Michigan	¶1602.4 Rule 5.2.1.10	TBD			1
Youth Representative (12-18): Midwest	¶1602.4 Rule 5.2.1.10	TBD			1
Youth Representative (12-18): Northern Skies	¶1602.4 Rule 5.2.1.10	TBD			1
Youth Representative (12-18): Northern Waters	¶1602.4 Rule 5.2.1.10	TBD			1

Last Name	First Name	Office Title or Description	Rule	Clergy / Repeat	Count
Anderson	Ruby	Delegate to General or Jurisdictional Conference	Standing Rules 5.2.2.12		1
Anderson	Ruby	District Lay Leader: Greater Detroit	¶1602.4 Rule 5.2.1.7	Repeat	0
Apol	David	Annual Conference Trustee	Standing Rules 5.2.2.17		1
Appling	Sharon	Board of Ordained Ministry, Member	Standing Rules 5.2.2.22		1
Archambeau	Don	Commission on the Annual Conference Session, Member	Standing Rules 5.2.2.20		1
Archambeau	Don	UMM Conference President	¶1602.4 Rule 5.2.1.5	Repeat	0
Arnold	Nancy	Annual Conference Coordinator	Standing Rules 5.2.2.3		1
Barrett	Joy	Conference Secretary	Standing Rules 5.2.2.1	Clergy	0
Bentley	Terri	Board of Ordained Ministry, Member	Standing Rules 5.2.2.22		1
Bos	Kim	Wesley Foundation Director Ferris State University	¶1602.e	Clergy	0
Bosserd	Jim	Council on Finance & Administration, Member	Standing Rules 5.2.2.16		1
Brainard	Ted	Board of Ordained Ministry, Member	Standing Rules 5.2.2.22		1
Brown	Diane	Delegate to General or Jurisdictional Conference	Standing Rules 5.2.2.12		0
Brown	Diane	Legislative Coordinator	Standing Rules 5.2.2.18	Repeat	1
Browne	Jennifer	Director of Clergy Services	Standing Rules 5.2.2.8	Clergy	0
Buck	Steven	Board of Pension and Health Benefits, Chair	Standing Rules 5.2.2.23	Clergy	0
Buxton	Sue	Committee on Rules, Member	Standing Rules 5.2.2.14		1
Carr	Elizabeth	Commission on the Annual Conference Session, Member	Standing Rules 5.2.2.20		1
Case	Jane	Diaconal Minister	¶1602.2 Rule 5.2.1.4		1
Childress	Thelma	Diaconal Minister	¶1602.2 Rule 5.2.1.4		1
Claxton	Melissa	Committee on Nominations, Chair	Standing Rules 5.2.2.23		1
Clevenger	Rena	Council on Finance & Administration, Member	Standing Rules 5.2.2.16		1
Coffey	Judy	Conference Leadership Council, Member	Standing Rules 5.2.2.15		1
Costales	Jorge	Annual Conference Trustee	Standing Rules 5.2.2.17		1
Covintree	George	Board of Justice, Chair	Standing Rules 5.2.2.23	Clergy	0
Davenport	Jess	Wesley Foundation Director Western Michigan University	¶1602.e	Clergy	0
DeLong	Cameron	Council on Finance & Administration, Member	Standing Rules 5.2.2.16		1
Dowell	Kenneth	Associate District Lay Leader: Greater Detroit	¶1602.4 Rule 5.2.1.7		1
Doyal	Mark	Commission on Communications, Chair	Standing Rules 5.2.2.23		1
Doyal	Mark	Director of Communications	Standing Rules 5.2.2.8	Repeat	0
DuPree	Brenda	Board of Global Ministries, Chair	Standing Rules 5.2.2.23		1
DuPree	Brenda	Delegate to General or Jurisdictional Conference	Standing Rules 5.2.2.12	Repeat	0

Elliott	Dirk	Director for Congregational Vibrancy/Leadership Development	Standing Rules 5.2.2.8	Clergy	0
Emmert	Don	Director of Benefits and Human Resources	Standing Rules 5.2.2.8	Clergy	0
Erbes	Annette	Conference Lay Leader	¶1602.4 Rule 5.2.1.6		1
Euper	Jacqueline	Persons Serving on General or Jurisdictional Agencies	Standing Rules 5.2.2.11		1
Falker	Katja	Conference Leadership Council, Member	Standing Rules 5.2.2.15		1
Federau	Deborah	Annual Conference Trustee	Standing Rules 5.2.2.17		1
Flegal	Daphna	Diaconal Minister	¶1602.2 Rule 5.2.1.4		1
Foster	Margaret	Diaconal Minister	¶1602.2 Rule 5.2.1.4		1
Garcia	Naomi	Associate Director for Congregational Vibrancy	Standing Rules 5.2.2.9		1
Gish	George	Diaconal Minister	¶1602.2 Rule 5.2.1.4		1
Gladstone	Carl	Wesley Foundation Director Motor City Ministry	¶1602.e	Clergy	0
Gotham	Don	Committee on Equitable Compensation, Chair	Standing Rules 5.2.2.23	Clergy	0
Griffin	Diane	Diaconal Minister	¶1602.2 Rule 5.2.1.4		1
Grigg III	Gordon	Delegate to General or Jurisdictional Conference	Standing Rules 5.2.2.12		1
Hahn	Lisa	Delegate to General or Jurisdictional Conference	Standing Rules 5.2.2.12		1
Hart	John	Conference Co-Director of Lay Servant Ministries	¶1602.4 Rule 5.2.1.12		1
Herriff	Judy	Protection Policy Implimentation Team, Chair	Standing Rules 5.2.2.23		1
Hillman	Anne	Deaconesses & Home Missioners Under Appointment	¶1602.4 Rule 5.2.1.3		1
Hodges	Carol	Board of Ordained Ministry, Member	Standing Rules 5.2.2.22		1
Hodges	Deborah	District Lay Leader: Midwest	¶1602.4 Rule 5.2.1.7		1
Hood	Anthony	Board of Congregational Life, Chair	Standing Rules 5.2.2.23	Clergy	0
Hopgood	Hoon-Yung	Delegate to General or Jurisdictional Conference	Standing Rules 5.2.2.12		1
Hudson	Audra	Wesley Foundation Director Central Michigan University	¶1602.e		1
Hunt	Blair	Committee on the Journal, Member	Standing Rules 5.2.2.21		1
Hurd	Elizabeth	Board of Young People's Ministries, Chair	Standing Rules 5.2.2.23	Clergy	0
Hurlbut	Wynne	District Lay Leader: Greater Southwest	¶1602.4 Rule 5.2.1.7		1
Janisch	Nancy	Wesley Foundation Director Grand Valley State University	¶1602.e	Clergy	0
Kobler	Tim	Wesley Foundation Director Univeristy of Michigan	¶1602.e	Clergy	0
LeBaron	James	Annual Conference Trustee	Standing Rules 5.2.2.17		1
Listed	None	Administrative Review Committee, Chair	Standing Rules 5.2.2.23	Clergy	0
Listed	None	Committee on Investigation, Chair	Standing Rules 5.2.2.23	Clergy	0
Listed	None	Conference Parlimentarian	Standing Rules 5.2.2.5		1
Listed	None	Conference Secretary of Global Ministries	¶1602.4 Rule 5.2.1.13		1
Listed	None	Conference Treasurer	Standing Rules 5.2.2.4		1

Listed	None	Convener of Young Adult Ministries	¶1602.4 Rule 5.2.1.9		1
Listed	None	Convener of Youth Ministries	¶1602.4 Rule 5.2.1.8		1
Long	Robert	Annual Conference Trustee	Standing Rules 5.2.2.17		1
Lundquist	David	Committee on Rules, Member	Standing Rules 5.2.2.14		1
MacGregor	Susan	Council on Finance & Administration, Member	Standing Rules 5.2.2.16		1
Mackey	Jean	Board of Ordained Ministry, Member	Standing Rules 5.2.2.22		1
Magee	Jim	Wesley Foundation Director Michigan State University	¶1602.e		1
Marsman	Mara	Commission on the Annual Conference Session, Member	Standing Rules 5.2.2.20		1
Mayo	Judith	Diaconal Minister	¶1602.2 Rule 5.2.1.4		1
Mieskowski	Laure	Board of Ordained Ministry, Member	Standing Rules 5.2.2.22		1
Miller	Diana	Persons Serving on General or Jurisdictional Agencies	Standing Rules 5.2.2.11		1
Mondragon	Rey	Committee on Hispanic/Latino Ministry, Chair	Standing Rules 5.2.2.23	Clergy	0
Morgan	Susan	Annual Conference Trustee	Standing Rules 5.2.2.17		1
Mossman-Celestin	Valerie	Deaconesses & Home Missioners Under Appointment	¶1602.4 Rule 5.2.1.3		1
Mountain	Amanda	Deaconesses & Home Missioners Under Appointment	¶1602.4 Rule 5.2.1.3		1
Murphy	Tonya	Committee on Rules, Member	Standing Rules 5.2.2.14		1
Nordbrock	Mandana	Committee on the Journal, Member	Standing Rules 5.2.2.21		1
Olin	Denny	District Lay Leader: Northern Waters	¶1602.4 Rule 5.2.1.7		1
Osborn	Clayton	Council on Finance & Administration, Member	Standing Rules 5.2.2.16		1
Packer	Matt	Diaconal Minister	¶1602.2 Rule 5.2.1.4		1
Paradine-Rice	Julia	UMW Conference President	¶1602.4 Rule 5.2.1.5		1
Perez	Paul	Director of Connectional Ministries	Standing Rules 5.2.2.7	Clergy	0
Peters	Jennifer	Conference Facilitator	Standing Rules 5.2.2.19		1
Peters	Jennifer	Delegate to General or Jurisdictional Conference	Standing Rules 5.2.2.12	Repeat	0
Phelps	Marchelle	Persons Serving on General or Jurisdictional Agencies	Standing Rules 5.2.2.11		1
Potter	Bonnie	District Co-Lay Leader: East Winds	¶1602.4 Rule 5.2.1.7		1
Poy	Lisa	Commission on the Annual Conference Session, Member	Standing Rules 5.2.2.20		1
Pratt	Jody	Conference Co-Director of Lay Servant Ministries	¶1602.4 Rule 5.2.1.12		1
Preston	John	District Lay Leader: Northern Skies	¶1602.4 Rule 5.2.1.7		1
Price	Todd	Committee on Rules, Member	Standing Rules 5.2.2.14		1
Proctor	Simmie	Committee on African American Ministry, Co-Chair	Standing Rules 5.2.2.23		1
Pung	Sue	Board of Ordained Ministry, Member	Standing Rules 5.2.2.22		1
Quick	Mary	Diaconal Minister	¶1602.2 Rule 5.2.1.4		1
Radek	Keith	Committee on Rules, Member	Standing Rules 5.2.2.14		1

Ross	Kelly	Board of Ordained Ministry, Member	Standing Rules 5.2.2.22		1
Rossmann	Cynthia	District Co-Lay Leader: East Winds	¶1602.4 Rule 5.2.1.7		1
Schramm	Linda	Persons Serving on General or Jurisdictional Agencies	Standing Rules 5.2.2.11		1
Searls	James	Committee on Rules, Member	Standing Rules 5.2.2.14		1
Seppanen	John	District Lay Leader: Heritage	¶1602.4 Rule 5.2.1.7		1
Simpson	Jeremy	Wesley Foundation Director Western Michigan University	¶1602.e		1
Spackman	Nona	District Lay Leader: Mid-Michigan	¶1602.4 Rule 5.2.1.7		1
Step	Gary	Associate Director for Congregational Vibrancy	Standing Rules 5.2.2.9	Clergy	0
Stephan	Brittney	Associate Director for Multicultural Vibrancy	Standing Rules 5.2.2.9	Clergy	0
Stewart	Pamela	Conference Statistician	Standing Rules 5.2.2.13		1
Sutton	Ruth	Delegate to General or Jurisdictional Conference	Standing Rules 5.2.2.12		1
Thomas	Erica	Wesley Foundation Director Northern Michigan University	¶1602.e		1
Tiedt	Patrick	Council on Finance & Administration, Member	Standing Rules 5.2.2.16		1
Vanderbilt	Herbert	Committee on Rules, Member	Standing Rules 5.2.2.14		1
VerVeer Guy	Nichea	Conference Leadership Council, Member	Standing Rules 5.2.2.15		1
VerVeer Guy	Nichea	Delegate to General or Jurisdictional Conference	Standing Rules 5.2.2.12	Repeat	0
VerVeer Guy	Nichea	Persons Serving on General or Jurisdictional Agencies	Standing Rules 5.2.2.11	Repeat	0
Vorbich	Andrew	Conference Chancellor	Standing Rules 5.2.2.2		1
Wayne	Andrew	Council on Finance & Administration, Member	Standing Rules 5.2.2.16		1
Wharton	John	Committee on the Episcopacy, Chair	Standing Rules 5.2.2.10		1
Wharton	John	Episcopal Residence Committee, Chair	Standing Rules 5.2.2.23	Repeat	0
White	Michelle	Deaconesses & Home Missioners Under Appointment	¶1602.4 Rule 5.2.1.3		1
White	William	Deaconesses & Home Missioners Under Appointment	¶1602.4 Rule 5.2.1.3		1
Whitman	Mary	Commission on Archives and History, Chair	Standing Rules 5.2.2.23		1
Williamson	Ronald	Committee on Native American Ministry, Chair	Standing Rules 5.2.2.23	Clergy	0
Wissinger	Dennis	District Lay Leader: Central Bay	¶1602.4 Rule 5.2.1.7		1
Witkowski	Laura	Associate Director for Lay Leadership Development	Standing Rules 5.2.2.9		1
Witkowski	Laura	Delegate to General or Jurisdictional Conference	Standing Rules 5.2.2.12	Repeat	0
Witkowski	Laura	Persons Serving on General or Jurisdictional Agencies	Standing Rules 5.2.2.11	Repeat	0
Yu	Sung	Conference Leadership Council, Member	Standing Rules 5.2.2.15		1
Yum	Jung Eun	Committee on Asian American Ministry, Chair	Standing Rules 5.2.2.23	Clergy	0
Zeigler	Carmen	Conference Leadership Council, Member	Standing Rules 5.2.2.15		1
Zienert	Ellen	Committee on Human Resources, Chair	Standing Rules 5.2.2.23	Clergy	0
Zylstra	Jay	Board of Ordained Ministry, Member	Standing Rules 5.2.2.22		1

	TBD	Young Adult Rep (18-30): Central Bay	¶602.4 Rule 5.2.1.11		1
	TBD	Young Adult Rep (18-30): East Winds	¶602.4 Rule 5.2.1.11		1
	TBD	Young Adult Rep (18-30): Greater Detroit	¶602.4 Rule 5.2.1.11		1
	TBD	Young Adult Rep (18-30): Greater Southwest	¶602.4 Rule 5.2.1.11		1
	TBD	Young Adult Rep (18-30): Heritage	¶602.4 Rule 5.2.1.11		1
	TBD	Young Adult Rep (18-30): Mid-Michigan	¶602.4 Rule 5.2.1.11		1
	TBD	Young Adult Rep (18-30): Midwest	¶602.4 Rule 5.2.1.11		1
	TBD	Young Adult Rep (18-30): Northern Skies	¶602.4 Rule 5.2.1.11		1
	TBD	Young Adult Rep (18-30): Northern Waters	¶602.4 Rule 5.2.1.11		1
	TBD	Youth Representative (12-18): Central Bay	¶602.4 Rule 5.2.1.10		1
	TBD	Youth Representative (12-18): East Winds	¶602.4 Rule 5.2.1.10		1
	TBD	Youth Representative (12-18): Greater Detroit	¶602.4 Rule 5.2.1.10		1
	TBD	Youth Representative (12-18): Greater Southwest	¶602.4 Rule 5.2.1.10		1
	TBD	Youth Representative (12-18): Heritage	¶602.4 Rule 5.2.1.10		1
	TBD	Youth Representative (12-18): Mid-Michigan	¶602.4 Rule 5.2.1.10		1
	TBD	Youth Representative (12-18): Midwest	¶602.4 Rule 5.2.1.10		1
	TBD	Youth Representative (12-18): Northern Skies	¶602.4 Rule 5.2.1.10		1
	TBD	Youth Representative (12-18): Northern Waters	¶602.4 Rule 5.2.1.10		1
		Adrian College Representative of Affiliate Agency (Voice Only)	Standing Rules 5.2.4.1	Voice Only	0
		Albion College Representative of Affiliate Agency (Voice Only)	Standing Rules 5.2.4.1	Voice Only	0
		Area United Methodist Church Historical Society, Inc Representative of Affiliate Agency (Voice Only)	Standing Rules 5.2.4.1	Voice Only	0
		Bay Shore Evangelical Association Representative of Affiliate Agency (Voice Only)	Standing Rules 5.2.4.1	Voice Only	0
		Bronson Health Group Representative of Affiliate Agency (Voice Only)	Standing Rules 5.2.4.1	Voice Only	0
		Clark Retirement Community Representative of Affiliate Agency (Voice Only)	Standing Rules 5.2.4.1	Voice Only	0
		Lake Louise Christian Community Representative of Affiliate Agency (Voice Only)	Standing Rules 5.2.4.1	Voice Only	0
		Methodist Children's Home Society Representative of Affiliate Agency (Voice Only)	Standing Rules 5.2.4.1	Voice Only	0
		Michigan Area Loan Funds Representative of Affiliate Agency (Voice Only)	Standing Rules 5.2.4.1	Voice Only	0
		Michigan Area United Methodist Camping (MAUMC) Representative of Affiliate Agency (Voice Only)	Standing Rules 5.2.4.1	Voice Only	0
		United Methodist Community House Representative of Affiliate Agency (Voice Only)	Standing Rules 5.2.4.1	Voice Only	0
		United Methodist Foundation of Michigan Representative of Affiliate Agency (Voice Only)	Standing Rules 5.2.4.1	Voice Only	0
		United Methodist Retirement Communities, Inc Representative of Affiliate Agency (Voice Only)	Standing Rules 5.2.4.1	Voice Only	0

District Name	Church SHORT Name	Membership	Greater than 167, divide by 167	Number of Clergy Serving	Lay Members to Conference
Central Bay	ALGER	27		1	1
Central Bay	ARENAC CNTY: CHRIST	69		1	1
Central Bay	AUBURN	156		1	1
Central Bay	BAY CITY: GRACE	363	2	1	2
Central Bay	BAY PORT	76		1	1
Central Bay	BENTLEY	33		1	1
Central Bay	BIRCH RUN	91		1	1
Central Bay	BLANCHARD-PINE RIVER	12		1	1
Central Bay	BURT	46		1	1
Central Bay	CARO	314	2	1	2
Central Bay	CASEVILLE	151		1	1
Central Bay	CASS CITY	169	1	1	1
Central Bay	CHURCHILL	85		1	1
Central Bay	CLARE	248	1	1	1
Central Bay	COLEMAN: FAITH	127		1	1
Central Bay	DALE	20		1	1
Central Bay	EDENVILLE	27		1	1
Central Bay	ELKTON	183	1	1	1
Central Bay	ESSEXVILLE: ST LUKE'S	238	1	1	1
Central Bay	FAIRGROVE	49		1	1
Central Bay	FARWELL	110		1	1
Central Bay	FRANKENMUTH	454	3	1	3
Central Bay	FREELAND	169	1	1	1
Central Bay	GARFIELD	46		1	1
Central Bay	GLADWIN: FIRST	202	1	1	1
Central Bay	GLADWIN: WAGARVILLE COMMUNITY	42		1	1
Central Bay	GLENNIE	23		1	1
Central Bay	GORDONVILLE	103		1	1
Central Bay	HALE: FIRST	181	1	1	1
Central Bay	HARRISON: THE GATHERING	48		1	1
Central Bay	HARRISVILLE	53		1	1

Central Bay	HAYES	69		1	1
Central Bay	HEMLOCK	106		1	1
Central Bay	KILMANAGH	34		1	1
Central Bay	KINGSTON	130		1	1
Central Bay	LAPORTE	39		1	1
Central Bay	LEATON	39		1	1
Central Bay	LINCOLN	54		1	1
Central Bay	MAYVILLE	187	1	1	1
Central Bay	MIDLAND CNTY: HOPE	65		1	1
Central Bay	MIDLAND: ALDERSGATE	408	2	1	2
Central Bay	MIDLAND: FIRST	1712	10	3	10
Central Bay	MIDLAND: HOMER	120		1	1
Central Bay	MILLINGTON	226		1	1
Central Bay	MIO	78		1	1
Central Bay	MT PLEASANT: CHIPPEWA INDIAN			1	1
Central Bay	MT PLEASANT: COUNTRYSIDE	59		1	1
Central Bay	MT PLEASANT: FIRST	262	2	1	2
Central Bay	MT PLEASANT: TRINITY	39		1	1
Central Bay	NELSON	98		1	1
Central Bay	OSCODA	204	1	1	1
Central Bay	OSCODA: INDIAN MISSION	85		1	1
Central Bay	OWENDALE	90		1	1
Central Bay	PIGEON: FIRST	157		1	1
Central Bay	PIGEON: SALEM	145		1	1
Central Bay	PINCONNING	82		1	1
Central Bay	PINNEBOG	16		1	1
Central Bay	PORT AUSTIN UPC	39		1	1
Central Bay	REESE	128		1	1
Central Bay	ROSE CITY: TRINITY	80		1	1
Central Bay	ROSEBUSH	103		1	1
Central Bay	SAGINAW: AMES	318	2	1	2
Central Bay	SAGINAW: FIRST	329	2	1	2
Central Bay	SAGINAW: NEW HEART	54		1	1
Central Bay	SAGINAW: SWAN VALLEY	99		1	1

Central Bay	SANFORD	163		1	1
Central Bay	SEBEWAING: TRINITY	186	1	1	1
Central Bay	SHEPHERD	76		1	1
Central Bay	ST CHARLES	131		1	1
Central Bay	Standish: Beacon of Light	71		1	1
Central Bay	SUTTON-SUNSHINE	69		1	1
Central Bay	TAWAS	205		1	1
Central Bay	VASSAR: FIRST	169	1	1	1
Central Bay	WATROUSVILLE	120		1	1
Central Bay	WEIDMAN	104		1	1
Central Bay	WEST BRANCH: FIRST	184	1	1	1
Central Bay	WHITTEMORE	65		1	1
Central Bay	WILBER	24		1	1
Central Bay	WINN	52		1	1
Central Bay	WISNER	166		1	1
East Winds	APPLEGATE	90		1	1
East Winds	ARMADA	114		1	1
East Winds	ATHERTON	130		1	1
East Winds	ATTICA	65		1	1
East Winds	AVOCA	42		1	1
East Winds	BAD AXE: FIRST	242	1	1	1
East Winds	BROWN CITY	121		1	1
East Winds	BUEL	61		1	1
East Winds	BURTON: CHRIST	69		1	1
East Winds	BYRON: FIRST	100		1	1
East Winds	CAPAC	103		1	1
East Winds	CARSONVILLE	10		1	1
East Winds	CENTRAL LAKEPORT	39		1	1
East Winds	CLARKSTON	1630	10	2	10
East Winds	CLIO: BETHANY	261	2	1	2
East Winds	COLE	95		1	1
East Winds	COLUMBIAVILLE	172	1	1	1
East Winds	CROSWELL: FIRST	58		1	1
East Winds	DAVISON	237	1	1	1

East Winds	DECKERVILLE	23		1	1
East Winds	DRYDEN	59		1	1
East Winds	DURAND: FIRST	130		1	1
East Winds	ELBA	26		1	1
East Winds	FENTON	671	4	1	4
East Winds	FLINT: ASBURY	127		1	1
East Winds	FLINT: BETHEL	253	2	1	2
East Winds	FLINT: BRISTOL	59		1	1
East Winds	FLINT: CALVARY	164		1	1
East Winds	FLINT: COURT STREET	469	3	1	3
East Winds	FLINT: HOPE	151		1	1
East Winds	FLUSHING	309	2	1	2
East Winds	FORESTER	28		1	1
East Winds	FOSTORIA	32		1	1
East Winds	GAINES	66		1	1
East Winds	GENESEE	62		1	1
East Winds	GOODRICH	247	1	1	1
East Winds	GRAND BLANC	329	2	1	2
East Winds	GRAND BLANC: PHOENIX	32		1	1
East Winds	HALSEY	86		1	1
East Winds	HARBOR BEACH	43		1	1
East Winds	HOLLY: CALVARY	177	1	1	1
East Winds	HOLLY: MT BETHEL	56		1	1
East Winds	IMLAY CITY	79		1	1
East Winds	JEDDO	54		1	1
East Winds	LAKE FENTON	178	1	1	1
East Winds	LAKE ORION	538	3	2	3
East Winds	LAMB	33		1	1
East Winds	LAPEER: TRINITY	430	3	1	3
East Winds	LENNON	61		1	1
East Winds	LEONARD	32		1	1
East Winds	LEXINGTON	142		1	1
East Winds	LINDEN	105		1	1
East Winds	MARLETTE: FIRST	184		1	1

East Winds	MARYSVILLE	258	2	1	2
East Winds	MCGREGOR	80		1	1
East Winds	MELVIN	27		1	1
East Winds	MEMPHIS: FIRST	45		1	1
East Winds	MINDEN CITY	21		1	1
East Winds	MONTROSE	134		1	1
East Winds	MT MORRIS: FIRST	121		1	1
East Winds	NORTH BRANCH: FIRST	101		1	1
East Winds	NORTH STREET	126		1	1
East Winds	OMARD	66		1	1
East Winds	OREGON	102		1	1
East Winds	ORTONVILLE	129		1	1
East Winds	OTISVILLE	58		1	1
East Winds	OXFORD	115		1	1
East Winds	PORT HOPE	49		1	1
East Winds	PORT HURON: FIRST	409	2	2	2
East Winds	PORT HURON: GRATIOT PK	53		1	1
East Winds	PORT SANILAC	58		1	1
East Winds	RICHFIELD	60		1	1
East Winds	RICHMOND: FIRST	206	1	1	1
East Winds	ROMEO	221	1	1	1
East Winds	SANDUSKY: FIRST	208	1	1	1
East Winds	SEYMOUR LAKE	102		1	1
East Winds	SILVERWOOD	34		1	1
East Winds	SNOVER: HERITAGE	116		1	1
East Winds	SOUTH MUNDY	87		1	1
East Winds	ST CLAIR: FIRST	320	2	1	2
East Winds	SWARTZ CREEK	445	3	1	3
East Winds	THETFORD CENTER	57		1	1
East Winds	THOMAS	28		1	1
East Winds	WEST BERLIN	40		1	1
East Winds	WEST DEERFIELD	48		1	1
East Winds	WEST FOREST	76		1	1
East Winds	WEST VIENNA	72		1	1

East Winds	WORTH TWP: BETHEL	52		1	1
East Winds	YALE	75		1	1
Greater Detroit	ALGONAC: TRINITY	65		1	1
Greater Detroit	BEVERLY HILLS	70		1	1
Greater Detroit	BIRMINGHAM: EMBURY	31		1	1
Greater Detroit	BIRMINGHAM: FIRST	2707	16	6	16
Greater Detroit	BLOOMFIELD HLS: ST PAUL	57		1	1
Greater Detroit	CLAWSON	43		1	1
Greater Detroit	DEARBORN: FIRST	378	2	2	2
Greater Detroit	DEARBORN: GOOD SHEPHERD	123		1	1
Greater Detroit	DETROIT: CALVARY	136		1	1
Greater Detroit	DETROIT: CASS CMNTY	97		2	2
Greater Detroit	DETROIT: CENTRAL	268	2	1	2
Greater Detroit	DETROIT: CENTRO FAMILIAR CRISTIANO			1	1
Greater Detroit	DETROIT: CONANT AVE	133		1	1
Greater Detroit	DETROIT: FORD MEMORIAL	21		1	1
Greater Detroit	DETROIT: FRENCH			1	1
Greater Detroit	DETROIT: METROPOLITAN	313	2	1	2
Greater Detroit	DETROIT: PEOPLE'S	66		1	1
Greater Detroit	DETROIT: RESURRECTION	33		1	1
Greater Detroit	DETROIT: SCOTT MEMORIAL	270	2	1	2
Greater Detroit	DETROIT: SECOND GRACE	375	2	2	2
Greater Detroit	DETROIT: ST PAUL	83		1	1
Greater Detroit	DETROIT: TRINITY-FAITH	153		1	1
Greater Detroit	DOWNRIVER	129		1	1
Greater Detroit	EASTPOINTE: IMMANUEL	134		1	1
Greater Detroit	FARMINGTON: FIRST	333	2	1	2
Greater Detroit	FARMINGTON: NARDIN PARK	793	5	1	5
Greater Detroit	FARMINGTON: ORCHARD	607	4	2	4
Greater Detroit	FERNDAL: FIRST	154		1	1
Greater Detroit	FLAT ROCK: FIRST	151		1	1
Greater Detroit	FRANKLIN: COMMUNITY	169		1	1
Greater Detroit	FRASER: CHRIST	177	1	1	1
Greater Detroit	GARDEN CITY: FIRST	95		1	1

Greater Detroit	GROSSE POINTE	577	3	1	3
Greater Detroit	HARPER WOODS: REDEEMER	62		1	1
Greater Detroit	HAZEL PARK: FIRST	55		1	1
Greater Detroit	HOWARTH	39		1	1
Greater Detroit	LIVONIA: CLARENCEVILLE	105		1	1
Greater Detroit	LIVONIA: NEWBURG	525	3	2	3
Greater Detroit	LIVONIA: ST MATTHEW'S	402	2	1	2
Greater Detroit	MACOMB: FAITH	58		1	1
Greater Detroit	MADISON HTS	54		1	1
Greater Detroit	MADISON HTS: KOREAN FIRST CENTRAL	157		1	1
Greater Detroit	MADISON HTS: VIETNAMESE MINISTRY			1	1
Greater Detroit	MT CLEMENS: FIRST	251	2	2	2
Greater Detroit	NEW BALTIMORE: GRACE	171		1	1
Greater Detroit	OMO: ZION	69		1	1
Greater Detroit	PAINT CREEK	45		1	1
Greater Detroit	PONTIAC: GRACE AND PEACE CMNTY	103		1	1
Greater Detroit	PONTIAC: ST JOHN	101		1	1
Greater Detroit	REDFORD: ALDERSGATE	326	2	2	2
Greater Detroit	REDFORD: NEW BEGINNINGS	23		1	1
Greater Detroit	RIVERVIEW	81		1	1
Greater Detroit	ROCHESTER HLS: ST LUKE'S	126		1	1
Greater Detroit	ROCHESTER: ST PAUL'S	2150	13	2	13
Greater Detroit	ROMULUS: COMMUNITY	63		1	1
Greater Detroit	ROSEVILLE: TRINITY	148		1	1
Greater Detroit	ROYAL OAK: FIRST	817	5	1	5
Greater Detroit	SOUTHFIELD: HOPE	1100	7	3	7
Greater Detroit	STERLING HEIGHTS: FIRST	63		1	1
Greater Detroit	TRENTON: FAITH	421	3	1	3
Greater Detroit	TRENTON: FIRST	97		1	1
Greater Detroit	TROY: BIG BEAVER	315	2	1	2
Greater Detroit	TROY: FIRST	362	2	1	2
Greater Detroit	TROY: KOREAN	1160	7	4	7
Greater Detroit	UTICA	244	1	1	1
Greater Detroit	WARREN: FIRST	246	1	1	1

Greater Detroit	WASHINGTON	34		1	1
Greater Detroit	WATERFORD: CENTRAL	421	3	2	3
Greater Detroit	WATERFORD: FOUR TOWNS	20		1	1
Greater Detroit	WATERFORD: TRINITY	42		1	1
Greater Detroit	WEST BLOOMFIELD	151		1	1
Greater Detroit	WESTLAND: ST JAMES	84		1	1
Greater Detroit	WYANDOTTE: FIRST	284	2	1	2
Greater Southwest	ALLEGAN	264	2	1	2
Greater Southwest	ALMENA	85		1	1
Greater Southwest	ARDEN	14		1	1
Greater Southwest	ATHENS	29		1	1
Greater Southwest	AUGUSTA: FELLOWSHIP	47		1	1
Greater Southwest	BANGOR: SIMPSON	134		1	1
Greater Southwest	BATTLE CREEK: BASELINE	55		1	1
Greater Southwest	BATTLE CREEK: CHAPEL HILL	400	2	2	2
Greater Southwest	BATTLE CREEK: CHRIST	83		1	1
Greater Southwest	BATTLE CREEK: CONVIS UNION	39		1	1
Greater Southwest	BATTLE CREEK: FIRST	168		1	1
Greater Southwest	BATTLE CREEK: MAPLE	61		1	1
Greater Southwest	BATTLE CREEK: NEWTON	69		1	1
Greater Southwest	BATTLE CREEK: WASHINGTON HTS	25		1	1
Greater Southwest	BELLEVUE	115		1	1
Greater Southwest	BERRIEN CNTY: LAKESIDE	32		1	1
Greater Southwest	BERRIEN SPRINGS	22		1	1
Greater Southwest	BRIDGMAN: FAITH	38		1	1
Greater Southwest	BRONSON: FIRST	55		1	1
Greater Southwest	BUCHANAN: FAITH	122		1	1
Greater Southwest	BUCHANAN: FIRST	117		1	1
Greater Southwest	BURNIPS	65		1	1
Greater Southwest	BURR OAK	30		1	1
Greater Southwest	CASCO	134		1	1
Greater Southwest	CASSOPOLIS	63		1	1
Greater Southwest	CENTREVILLE	184	1	1	1
Greater Southwest	CLIMAX	77		1	1

Greater Southwest	COLDWATER	210	1	1	1
Greater Southwest	COLOMA	150		1	1
Greater Southwest	COLON	57		1	1
Greater Southwest	CONSTANTINE	125		1	1
Greater Southwest	DELTON: FAITH	169		1	1
Greater Southwest	DOWAGIAC: FIRST	152		1	1
Greater Southwest	DOWLING: COUNTRY CHAPEL	172	1	1	1
Greater Southwest	EDWARDSBURG: HOPE	440	3	1	3
Greater Southwest	FENNVILLE	73		1	1
Greater Southwest	FENNVILLE: PEARL	29		1	1
Greater Southwest	GALESBURG	74		1	1
Greater Southwest	GALIEN RIVER	49		1	1
Greater Southwest	GANGES	87		1	1
Greater Southwest	GIRARD	56		1	1
Greater Southwest	GLENN	16		1	1
Greater Southwest	GOBLES	61		1	1
Greater Southwest	GULL LAKE	247	1	1	1
Greater Southwest	HARTFORD	231	1	1	1
Greater Southwest	HINCHMAN	52		1	1
Greater Southwest	HOPKINS	74		1	1
Greater Southwest	KALAMAZOO: FIRST	842	5	2	5
Greater Southwest	KALAMAZOO: MILWOOD	131		1	1
Greater Southwest	KALAMAZOO: NORTHWEST	23		1	1
Greater Southwest	KALAMAZOO: SUNNYSIDE	107		1	1
Greater Southwest	KALAMAZOO: WESTWOOD	192	1	2	2
Greater Southwest	KENDALL	22		1	1
Greater Southwest	LACOTA	27		1	1
Greater Southwest	LAWRENCE	108		1	1
Greater Southwest	LAWTON: ST PAUL'S	91		1	1
Greater Southwest	MARCELLUS	66		1	1
Greater Southwest	MARCELLUS: WAKELEE	43		1	1
Greater Southwest	MARTIN	105		1	1
Greater Southwest	MENDON	62		1	1
Greater Southwest	MONTEREY CENTER	44		1	1

Greater Southwest	MORRIS CHAPEL	24		2	1*
Greater Southwest	NEW BUFFALO: WATER'S EDGE	178	1	1	1
Greater Southwest	NILES: NEW JOURNEY	147		2	1*
Greater Southwest	NILES: PORTAGE PRAIRIE	155		1	1
Greater Southwest	NOTTAWA	8		1	1
Greater Southwest	OSHTEMO	95		1	1
Greater Southwest	OSHTEMO: LIFESPRING	33		1	1
Greater Southwest	OTSEGO	381	2	1	2
Greater Southwest	PARCHMENT	225	1	1	1
Greater Southwest	PAW PAW	97		1	1
Greater Southwest	PLAINWELL: FIRST	160		1	1
Greater Southwest	POKAGON	63		1	1
Greater Southwest	PORTAGE: CHAPEL HILL	480	3	2	3
Greater Southwest	PORTAGE: PATHFINDER	354	2	1	2
Greater Southwest	RIVERSIDE	61		1	1
Greater Southwest	SAUGATUCK	32		1	1
Greater Southwest	SCHOOLCRAFT	78		1	1
Greater Southwest	SCHOOLCRAFT: PLEASANT VALLEY	48		1	1
Greater Southwest	SCOTTDALE	54		1	1
Greater Southwest	SCOTTS	27		1	1
Greater Southwest	SHELBYVILLE	53		1	1
Greater Southwest	SILVER CREEK	86		1	1
Greater Southwest	SODUS: CHAPEL HILL	167		1	1
Greater Southwest	SOUTH HAVEN: FIRST	121		1	1
Greater Southwest	SOUTH MONTEREY	33		1	1
Greater Southwest	ST JOSEPH: FIRST	275	2	2	2
Greater Southwest	STEVENSVILLE	385	2	1	2
Greater Southwest	STURGIS: FIRST	303	2	1	2
Greater Southwest	THREE OAKS	111		1	1
Greater Southwest	THREE RIVERS: CENTER PARK	124		1	1
Greater Southwest	THREE RIVERS: FIRST	90		1	1
Greater Southwest	THREE RIVERS: NINTH STREET	52		1	1
Greater Southwest	TOWNLIN	84		1	1
Greater Southwest	UNION CITY	88		1	1

Greater Southwest	VICKSBURG	251	2	1	2
Greater Southwest	WHITE PIGEON	43		1	1
Heritage	ADRIAN: FIRST	426	3	1	3
Heritage	ALBION: FIRST	214	1	1	1
Heritage	ALLEN	52		1	1
Heritage	ANN ARBOR: FIRST	933	6	3	6
Heritage	ANN ARBOR: KOREAN	210	1	2	2
Heritage	ANN ARBOR: WEST SIDE	234	1	1	1
Heritage	AZALIA	25		2	1**
Heritage	BELLEVILLE: FIRST	285	2	1	2
Heritage	BLISSFIELD: EMMANUEL	43		1	1
Heritage	BLISSFIELD: FIRST	134		1	1
Heritage	BRIGHTON: FIRST	715	4	2	4
Heritage	BRITTON: GRACE	143		1	1
Heritage	CALHOUN COUNTY: HOMER	43		1	1
Heritage	CAMDEN	11		1	1
Heritage	CANTON: CHERRY HILL	63		1	1
Heritage	CANTON: FRIENDSHIP	238	1	1	1
Heritage	CARLETON	260	2	1	2
Heritage	CHELSEA: FIRST	639	4	2	4
Heritage	CLAYTON	42		1	1
Heritage	CLINTON	105		1	1
Heritage	COMMERCE	307	2	1	2
Heritage	CONCORD	87		1	1
Heritage	DEERFIELD	14		1	1
Heritage	DENTON: FAITH	19		1	1
Heritage	DEXTER	1210	7	2	7
Heritage	DIXBORO	192	1	2	1
Heritage	DUNDEE	256	2	2	2**
Heritage	ERIE	135		1	1
Heritage	FRONTIER	36		1	1
Heritage	GRASS LAKE	125		1	1
Heritage	HARDY	118		1	1
Heritage	HARTLAND	113		1	1

Heritage	HILLSDALE: FIRST	144		1	1
Heritage	HILLSIDE	113		1	1
Heritage	HOWELL: FIRST	515	3	1	3
Heritage	HUDSON: FIRST	116		1	1
Heritage	IDA	82		1	1
Heritage	JACKSON: BROOKSIDE	126		1	1
Heritage	JACKSON: CALVARY	94		1	1
Heritage	JACKSON: FIRST	547	3	2	3
Heritage	JACKSON: TRINITY	42		1	1
Heritage	JACKSON: ZION	13		1	1
Heritage	JEROME	22		1	1
Heritage	JONESVILLE	106		1	1
Heritage	LA SALLE: ZION	69		1	1
Heritage	LAMBERTVILLE	361	2	1	2
Heritage	LEE CENTER	62		1	1
Heritage	LONDON	74		2	1**
Heritage	LULU	31		1	1
Heritage	LYON LAKE	35		1	1
Heritage	MACON	57		1	1
Heritage	MANCHESTER: FIRST	167		1	1
Heritage	MANCHESTER: SHARON	129		1	1
Heritage	MARSHALL	368	2	1	2
Heritage	MILAN: MARBLE MEMORIAL	227	1	1	1
Heritage	MILFORD	214	1	3	2***
Heritage	MONROE: CALVARY	53		1	1
Heritage	MONROE: FAITH	123		1	1
Heritage	MONROE: ST PAUL'S	525	3	1	3
Heritage	MONTGOMERY	22		1	1
Heritage	MORENCI	84		1	1
Heritage	NAPOLEON	76		1	1
Heritage	NEW HUDSON	76		1	1
Heritage	NORTH LAKE	101		1	1
Heritage	NORTH PARMA	55		1	1
Heritage	NORTHVILLE: FIRST	1033	6	2	6

Heritage	NOVI	127		1	1
Heritage	OAK GROVE	86		3	1***
Heritage	PETERSBURG	64		1	1
Heritage	PINCKNEY: ARISE	90		1	1
Heritage	PLYMOUTH: FIRST	503	3	2	3
Heritage	POPE	23		1	1
Heritage	QUINCY	47		1	1
Heritage	READING	107		1	1
Heritage	ROLLIN CENTER	38		1	1
Heritage	SALEM GROVE	35		1	1
Heritage	SALINE: FIRST	707	4	1	4
Heritage	SOMERSET CENTER	35		1	1
Heritage	SOUTH LYON: FIRST	564	3	1	3
Heritage	SOUTH ROCKWOOD	82		1	1
Heritage	SPRINGPORT	63		1	1
Heritage	SPRINGVILLE	141		1	1
Heritage	STOKES CHAPEL	20		1	1
Heritage	STONY CREEK	124		1	1
Heritage	TECUMSEH	264	2	1	2
Heritage	THRIVE CHURCH OF HIGHLAND	389	2	1	2
Heritage	WALLED LAKE	125		1	1
Heritage	WATERLOO VILLAGE	39		1	1
Heritage	WELLSVILLE	38		1	1
Heritage	WESTON	98		1	1
Heritage	WILLOW	90		1	1
Heritage	YPSILANTI: FIRST	353	2	1	2
Heritage	YPSILANTI: LINCOLN CMNTY	49		1	1
Heritage	YPSILANTI: ST MATTHEW'S	107		1	1
Mid-Michigan	ALMA	207		1	1
Mid-Michigan	ASHLEY	31		1	1
Mid-Michigan	BANCROFT	29		1	1
Mid-Michigan	BANNISTER	39		1	1
Mid-Michigan	BARRY COUNTY: WOODLAND	53		1	1
Mid-Michigan	BATH	91		1	1

Mid-Michigan	BEEBE	18		1	1
Mid-Michigan	BRECKENRIDGE	113		1	1
Mid-Michigan	BROOKFIELD EATON	28		1	1
Mid-Michigan	CARLAND	20		1	1
Mid-Michigan	CARSON CITY	58		1	1
Mid-Michigan	CHAPIN	70		1	1
Mid-Michigan	CHARLOTTE: LAWRENCE AVE	131		1	1
Mid-Michigan	CHESANING: TRINITY	283	2	1	2
Mid-Michigan	CORUNNA	67		1	1
Mid-Michigan	CORUNNA: NORTHWEST VENICE	17		1	1
Mid-Michigan	DELTA MILLS	39		1	1
Mid-Michigan	DEWITT: REDEEMER	795	5	2	5
Mid-Michigan	DIMONDALE	51		1	1
Mid-Michigan	EAST LANSING: THE PEOPLES CHURCH			1	1
Mid-Michigan	EAST LANSING: UNIVERSITY	447	3	1	3
Mid-Michigan	EATON RAPIDS: FIRST	316	2	1	2
Mid-Michigan	ELSIE	97		1	1
Mid-Michigan	FELT PLAINS	10		1	1
Mid-Michigan	FOWLERVILLE: FIRST	112		1	1
Mid-Michigan	FOWLERVILLE: TRINITY	61		1	1
Mid-Michigan	GRAND LEDGE: FIRST	219	1	1	1
Mid-Michigan	GRESHAM	62		1	1
Mid-Michigan	GUNNISONVILLE	59		1	1
Mid-Michigan	HASTINGS: FIRST	203	1	1	1
Mid-Michigan	HASTINGS: HOPE	71		1	1
Mid-Michigan	HASTINGS: WELCOME CORNERS	28		1	1
Mid-Michigan	HENDERSON	50		1	1
Mid-Michigan	HOLT	334	2	1	2
Mid-Michigan	ITHACA	123		1	1
Mid-Michigan	JUDDVILLE	39		1	1
Mid-Michigan	KALAMO	49		1	1
Mid-Michigan	LAINGSBURG	117		1	1
Mid-Michigan	LAKE ODESSA: CENTRAL	124		1	1
Mid-Michigan	LAKE ODESSA: LAKEWOOD	167		2	2

Mid-Michigan	LANSING: ASBURY	129		1	1
Mid-Michigan	LANSING: CENTRAL	303	2	1	2
Mid-Michigan	LANSING: FIRST	101		1	1
Mid-Michigan	LANSING: GRACE	213	1	1	1
Mid-Michigan	LANSING: MOUNT HOPE	311	2	1	2
Mid-Michigan	LANSING: SYCAMORE CRK	275	2	2	2
Mid-Michigan	LESLIE	55		1	1
Mid-Michigan	LIVINGSTON CIRCUIT: PLAINFIELD	41		1	1
Mid-Michigan	LOWE	79		1	1
Mid-Michigan	MAPLE RAPIDS	31		1	1
Mid-Michigan	MASON: FIRST	404	2	1	2
Mid-Michigan	MIDDLEBURY	36		1	1
Mid-Michigan	MILLVILLE	77		1	1
Mid-Michigan	MORRICE	35		1	1
Mid-Michigan	MUNITH	31		1	1
Mid-Michigan	NASHVILLE	81		1	1
Mid-Michigan	NASHVILLE: PEACE	23		1	1
Mid-Michigan	NEW LOTHROP: FIRST	75		1	1
Mid-Michigan	OKEMOS: COMMUNITY CHURCH	441	3	1	3
Mid-Michigan	OVID UNITED CHURCH	81		1	1
Mid-Michigan	OWOSSO: FIRST	256	2	1	2
Mid-Michigan	OWOSSO: TRINITY	87		1	1
Mid-Michigan	PERRY	47		1	1
Mid-Michigan	PITTSBURG	38		1	1
Mid-Michigan	POMPEII	32		1	1
Mid-Michigan	PORTLAND	216	1	1	1
Mid-Michigan	RIVERDALE: LINCOLN ROAD	86		1	1
Mid-Michigan	ROBBINS	116		1	1
Mid-Michigan	SHAFTSBURG	48		1	1
Mid-Michigan	SHEPARDSVILLE	26		1	1
Mid-Michigan	ST JOHNS: PILGRIM	252	2	1	2
Mid-Michigan	ST LOUIS: FIRST	191	1	1	1
Mid-Michigan	STOCKBRIDGE	37		1	1
Mid-Michigan	SUNFIELD	44		1	1

Mid-Michigan	VERNON	25		1	1
Mid-Michigan	WACOUSTA COMMUNITY	261	2	1	2
Mid-Michigan	WEBBERVILLE	118		1	1
Mid-Michigan	WILLIAMSTON	150		1	1
Mid-Michigan	WILLIAMSTON: CROSSROADS	30		1	1
Mid-Michigan	WILLIAMSTON: WHEATFIELD	44		1	1
Midwest	ALLENDALE: VALLEY CHURCH	162		1	1
Midwest	AMBLE	58		1	1
Midwest	BARRYTON: FAITH	21		1	1
Midwest	BELDING	32		1	1
Midwest	BERLIN CENTER	40		1	1
Midwest	BIG RAPIDS: FIRST	272	2	1	2
Midwest	BIG RAPIDS: THIRD AVENUE	44		1	1
Midwest	BOWNE CENTER	93		1	1
Midwest	BRADLEY: INDIAN MISSION	28		1	1
Midwest	BYRON CENTER	150		1	1
Midwest	CALEDONIA	159		1	1
Midwest	CARLISLE	59		1	1
Midwest	CEDAR SPRINGS	148		1	1
Midwest	CLAYBANKS	50		1	1
Midwest	COOPERSVILLE	92		1	1
Midwest	COURTLAND-OAKFIELD	84		1	1
Midwest	CRYSTAL VALLEY	20		1	1
Midwest	DORR: CROSSWIND CMNTY	84		1	1
Midwest	EAST NELSON	106		1	1
Midwest	EDMORE: FAITH	147		1	1
Midwest	FENWICK	10		1	1
Midwest	FREMONT	333	2	1	2
Midwest	GEORGETOWN	386	2	1	2
Midwest	GRAND HAVEN: CHURCH OF THE DUNES	465	3	1	3
Midwest	GRAND RAPIDS: ALDERSGATE	165		1	1
Midwest	GRAND RAPIDS: CORNERSTONE	1627	10	3	10
Midwest	GRAND RAPIDS: FAITH	106		1	1
Midwest	GRAND RAPIDS: FIRST	916	5	3	5

Midwest	GRAND RAPIDS: LA NUEVA ESPERANZA	73		1	1
Midwest	GRAND RAPIDS: NORTHLAWN	160		1	1
Midwest	GRAND RAPIDS: RESTORATION COMMUNITY			1	1
Midwest	GRAND RAPIDS: SAINT PAUL'S	150		1	1
Midwest	GRAND RAPIDS: SOUTH	103		1	1
Midwest	GRAND RAPIDS: TRINITY	436	3	1	3
Midwest	GRAND RAPIDS: VIETNAMESE	95		1	1
Midwest	GRANDVILLE	230	1	1	1
Midwest	GRANT CENTER	20		1	1
Midwest	GREENVILLE: FIRST	535	3	1	3
Midwest	HART	108		1	1
Midwest	HESPERIA	93		1	1
Midwest	HOLLAND: FIRST	531	3	3	3
Midwest	HOLTON	194	1	1	1
Midwest	IONIA: EASTON	72		1	1
Midwest	IONIA: FIRST	80		1	1
Midwest	IONIA: ZION	64		1	1
Midwest	LAKEVIEW: NEW LIFE	179	1	1	1
Midwest	LEIGHTON	140		1	1
Midwest	LEVALLEY	142		1	1
Midwest	LOWELL: FIRST	343	2	2	2
Midwest	LOWELL: VERGENNES	103		1	1
Midwest	LYONS-MUIR	49		1	1
Midwest	MARNE	84		1	1
Midwest	MEARS	89		1	1
Midwest	MECOSTA: NEW HOPE	205	1	1	1
Midwest	MIDDLEVILLE	213	1	1	1
Midwest	MONTAGUE	361	2	1	2
Midwest	MUSKEGON HEIGHTS: TEMPLE	122		1	1
Midwest	MUSKEGON: CENTRAL	201	1	1	1
Midwest	MUSKEGON: CRESTWOOD	43		1	1
Midwest	MUSKEGON: LAKE HARBOR	380	2	1	2
Midwest	NEWAYGO	74		1	1
Midwest	NORTH MUSKEGON: COMMUNITY	343	2	1	2

Midwest	PALO	11		1	1
Midwest	PARIS	35		1	1
Midwest	PARMELEE	37		1	1
Midwest	PENTWATER: CENTENARY	133		1	1
Midwest	PIERSON: HERITAGE	224	1	1	1
Midwest	RAVENNA	60		1	1
Midwest	ROCKFORD	379	2	1	2
Midwest	RODNEY	14		1	1
Midwest	SALEM: INDIAN MISSION	24		1	1
Midwest	SAND LAKE	14		1	1
Midwest	SHELBY	61		1	1
Midwest	SITKA	25		1	1
Midwest	SOUTH ENSLEY	48		1	1
Midwest	SPARTA	167		1	1
Midwest	STANWOOD: NORTHLAND	128		1	1
Midwest	TURK LAKE	34		1	1
Midwest	TWIN LAKE	89		1	1
Midwest	VICKERYVILLE	8		1	1
Midwest	WALKERVILLE	11		1	1
Midwest	WAYLAND	109		1	1
Midwest	WHITE CLOUD	115		1	1
Midwest	WOLF LAKE	85		1	1
Midwest	WYOMING PARK	74		1	1
Midwest	WYOMING: WESLEY PARK	275	2	1	2
Northern Skies	ALGONQUIN	56		1	1
Northern Skies	AMASA: GRACE	24		1	1
Northern Skies	BARK RIVER	76		1	1
Northern Skies	BERGLAND	14		1	1
Northern Skies	CALUMET	114		1	1
Northern Skies	CHEBOYGAN: ST PAUL'S	245	1	1	1
Northern Skies	CRYSTAL FALLS: CHRIST	120		1	1
Northern Skies	EMMET CNTY: NEW HOPE	63		1	1
Northern Skies	ENGADINE	39		1	1
Northern Skies	ESCANABA: CENTRAL	168		1	1

Northern Skies	ESCANABA: FIRST	105		1	1
Northern Skies	EWEN	21		1	1
Northern Skies	FAITHORN	26		1	1
Northern Skies	GERMFASK	21		1	1
Northern Skies	GLADSTONE: MEMORIAL	257	2	1	2
Northern Skies	GRAND MARAIS	10		1	1
Northern Skies	GREENLAND	40		1	1
Northern Skies	GWINN	224	1	1	1
Northern Skies	HANCOCK: FIRST	296	2	1	2
Northern Skies	HERMANSVILLE: FIRST	67		1	1
Northern Skies	HOUGHTON: GRACE	118		1	1
Northern Skies	HULBERT: TAHQUAMENON	8		1	1
Northern Skies	IRON MOUNTAIN: FIRST	52		1	1
Northern Skies	IRON MOUNTAIN: TRINITY	288	2	1	2
Northern Skies	IRONWOOD: WESLEY	123		1	1
Northern Skies	ISHPEMING: WESLEY	284	2	1	2
Northern Skies	LAKE LINDEN	105		1	1
Northern Skies	L'ANSE	189		1	1
Northern Skies	MACKINAW CITY: CHURCH OF THE STRAITS	107		1	1
Northern Skies	MANISTIQUE: FIRST	54		1	1
Northern Skies	MARQUETTE: HOPE	738	4	2	4
Northern Skies	MCMILLAN	13		1	1
Northern Skies	MENOMINEE: FIRST	75		1	1
Northern Skies	MICHIGAMME: WOODLAND	21		1	1
Northern Skies	MOHAWK AHMEEK	28		1	1
Northern Skies	MUNISING	71		1	1
Northern Skies	NEWBERRY	84		1	1
Northern Skies	NORWAY: GRACE	146		1	1
Northern Skies	ONTONAGON	127		1	1
Northern Skies	PAINESDALE: ALBERT PAINE MEMORIAL	41		1	1
Northern Skies	PARADISE	30		1	1
Northern Skies	PICKFORD	205	1	1	1
Northern Skies	QUINNESEC	50		1	1
Northern Skies	REPUBLIC	40		1	1

Northern Skies	ROCKLAND: ST PAUL'S	61		1	1
Northern Skies	SAULT STE MARIE: CENTRAL	162		1	1
Northern Skies	SIDNAW	16		1	1
Northern Skies	ST IGNACE	164		1	1
Northern Skies	STEPHENSON	47		1	1
Northern Skies	TRENARY	21		1	1
Northern Skies	WAKEFIELD	32		1	1
Northern Skies	WHITE PINE COMMUNITY	67		1	1
Northern Skies	ZEBA	33		1	1
Northern Waters	ALBA	23		1	1
Northern Waters	ALDEN	62		1	1
Northern Waters	ALPENA: FIRST	222	1	1	1
Northern Waters	ARCADIA	17		1	1
Northern Waters	ASHTON	31		1	1
Northern Waters	AVONDALE	8		1	1
Northern Waters	BALDWIN: COVENANT CMNTY	36		1	1
Northern Waters	BARNARD	61		1	1
Northern Waters	BEAR LAKE	67		1	1
Northern Waters	BELLAIRE: COMMUNITY	122		1	1
Northern Waters	BOYNE CITY	54		1	1
Northern Waters	BOYNE FALLS	27		1	1
Northern Waters	BRETHREN: EPWORTH	26		1	1
Northern Waters	BROOKS CORNERS	23		1	1
Northern Waters	CADILLAC	367	2	1	2
Northern Waters	CADILLAC: SOUTH COMMUNITY	26		1	1
Northern Waters	CENTRAL LAKE	23		1	1
Northern Waters	CHARLEVOIX	81		1	1
Northern Waters	CHARLEVOIX: GREENSKY HILL	114		1	1
Northern Waters	CHASE: BARTON	12		1	1
Northern Waters	EAST JORDAN	108		1	1
Northern Waters	ELBERTA	28		1	1
Northern Waters	EMPIRE	75		1	1
Northern Waters	EPSILON	38		1	1
Northern Waters	EVART	78		1	1

Northern Waters	FIFE LAKE	30		1	1
Northern Waters	FRANKFORT	101		1	1
Northern Waters	FREE SOIL - FOUNTAIN	30		1	1
Northern Waters	GAYLORD: FIRST	540	3	1	3
Northern Waters	GRANT	52		1	1
Northern Waters	GRAWN	100		1	1
Northern Waters	GRAYLING: MICHELSON MEM.	203	1	1	1
Northern Waters	HARBOR SPRINGS	68		1	1
Northern Waters	HARRIETTA	51		1	1
Northern Waters	HERSEY	75		1	1
Northern Waters	HILLMAN	98		1	1
Northern Waters	HORTON BAY	36		1	1
Northern Waters	HOUGHTON LAKE	367	2	1	2
Northern Waters	INDIAN RIVER	253	2	1	2
Northern Waters	KALKASKA	85		1	1
Northern Waters	KESWICK	54		1	1
Northern Waters	KEWADIN	34		1	1
Northern Waters	KEWADIN: INDIAN MISSION	20		1	1
Northern Waters	KINGSLEY	138		1	1
Northern Waters	LAKE ANN	149		1	1
Northern Waters	LAKE CITY	139		1	1
Northern Waters	LELAND	307	2	1	2
Northern Waters	LEROY	78		1	1
Northern Waters	LUDINGTON: ST PAUL	142		1	1
Northern Waters	LUDINGTON: UNITED	297	2	1	2
Northern Waters	LUTHER	22		1	1
Northern Waters	MANCELONA	88		1	1
Northern Waters	MANISTEE	303	2	1	2
Northern Waters	MANTON	112		1	1
Northern Waters	MARION	90		1	1
Northern Waters	MERRITT-BUTTERFIELD	52		1	1
Northern Waters	MESICK	36		1	1
Northern Waters	MILLERSBURG	59		1	1
Northern Waters	MOORESTOWN-STITTSVILLE	43		1	1

Northern Waters	NORTHPORT: INDIAN MISSION	45		1	1
Northern Waters	NORWOOD	8		1	1
Northern Waters	OLD MISSION PENINSULA	53		1	1
Northern Waters	ONAWAY	187	1	1	1
Northern Waters	OSSINEKE	97		1	1
Northern Waters	PETOSKEY	490	3	1	3
Northern Waters	REED CITY	227	1	1	1
Northern Waters	ROSCOMMON: GOOD SHEPHERD	185	1	1	1
Northern Waters	SCOTTVILLE	111		1	1
Northern Waters	SEARS	11		1	1
Northern Waters	SOUTH BOARDMAN	9		1	1
Northern Waters	SPRATT	64		1	1
Northern Waters	TRAVERSE BAY	158		1	1
Northern Waters	TRAVERSE CITY: CENTRAL	976	6	2	6
Northern Waters	WILLIAMSBURG	56		1	1