



# Engage*mi*

2020-2021



**Michigan Conference**  
The United Methodist Church



# Engage<sup>mi</sup>



**Michigan Conference**

The United Methodist Church

*Revised 8/1/20. Please visit  
[michiganumc.org/mission/engage-mi](http://michiganumc.org/mission/engage-mi) for  
the most up to date information.*



# contents

<b>4</b>	Engage <sup>mi</sup> Overview
<b>5</b>	“Ministry With” – Foundational Concept of Engage <sup>mi</sup>
<b>6</b>	Letter from Conference Director of Connectional Ministry
<b>8</b>	Steps to becoming an Engage <sup>mi</sup> Congregation
<b>11</b>	LEARN
<b>14</b>	GIVE
<b>14</b>	Step 1: 100% of Michigan Conference Ministry Shares
<b>15</b>	Step 2: Michigan
<b>15</b>	Conference Projects
<b>21</b>	District Projects
<b>26</b>	Step 3: National
<b>29</b>	Step 4: International General Advance Projects
<b>29</b>	International General Advance Projects
<b>30</b>	Haiti General Advance Projects
<b>31</b>	Liberia General Advance Projects
<b>32</b>	Step 5: Mission Personnel
<b>38</b>	Covenant Partner with a Mission Personnel Form
<b>40</b>	Step 6: Give to United Methodist Committee on Relief (UMCOR)
<b>42</b>	ACT
<b>44</b>	Michigan Conference Contacts
<b>45</b>	How Does My Congregation Submit funds for Engage <sup>mi</sup>
<b>46</b>	Engage <sup>mi</sup> Annual Report



# Engage<sup>mi</sup> Overview

Engage<sup>mi</sup> is the mission engagement program for the Michigan Conference.

Engage<sup>mi</sup> challenges Michigan Conference congregations to comprehensive missional learning, giving, and action with the goal of encouraging congregations to shift from transactional “ministry to” models to relational “ministry with” vulnerable people and communities.

The Engage<sup>mi</sup> program consists of three focus areas: Learn, Give, Act. In this book, you will find descriptions of each of these areas.

Congregations who meet the requirements in all three areas will be recognized as “Engage<sup>mi</sup> Congregations.” Please submit your Engage<sup>mi</sup> Learn, Give, and Act Annual Reports by January 10 of each year to be recognized for your previous year’s work.

You can find more information about the program online at [www.michiganumc.org/engage-mi](http://www.michiganumc.org/engage-mi).

If you have questions, please contact Paul Perez, Director of Connectional Ministry (517-347-4030 ext. 4070 or [pperez@michiganumc.org](mailto:pperez@michiganumc.org)).

# “Ministry With”

## Foundational Concept for Engage<sup>mi</sup>

“Ministry with” is the foundational concept for the **Engage<sup>mi</sup>** program. Based on The United Methodist Church’s “Ministry with the Poor” Area of Focus, “ministry with” is grounded in Jesus’ practice of ministry, and our Wesleyan heritage. It is an invitation to move from models of “ministry to” into models of “ministry with.”

“Ministry to” is defined as mission and ministry programs that merely “give to” or “do for” people. These programs can be highly efficient in distributing materials and resources to address immediate basic needs of food, water, clothing, and shelter. However, they can also create a hierarchy of “givers” over “receivers,” foster systems and relationships of dependency, and treat “givers” as saviors having all the resources and answers and the “receivers” as objects of charity and problems to be fixed.

In contrast, “ministry with” seeks not only to meet immediate needs, but, also, to foster mutual relationships where all participants are met with dignity, engaged in shared leadership, and growing together in God’s love. It is a challenge for all of us to prioritize people over programs, relationships over resources, and development of long-term solutions over quick fixes.

The **Engage<sup>mi</sup>** mission and ministry projects, here in Michigan and around the world, are all seeking to respond to this invitation. The goal of **Engage<sup>mi</sup>** is to encourage your congregation to partner with these projects and to meet the challenge of being in “ministry with” people in your congregation and your local community.



# Letter from Conference Director of Connectional Ministry

**Dear Michigan Conference Mission Leaders,**

2020 has brought tremendous challenges; the fear and exhaustion of living in a global pandemic, the impact of renewed struggles for racial justice, a deeply divisive election season, and continued uncertainty about our denomination's future.

Thank you for facing these challenges to the best of your ability and for finding creative and safe ways to continue being in mission and ministry with your local communities. None of us prepared for "such a time as this." May we all be gracious with ourselves and each other as we seek to live and work in the midst of these challenges.

Since the 2019 special General Conference and the postponement of the 2020 General Conference, I have heard several of you wonder aloud or ask directly about continuing to give funds to the General Board of Global Ministries Advance projects, especially those outside the U.S.A.

**My response:**

The vast majority of the projects and mission personnel listed in this book are engaged in basic humanitarian and community development work. Your giving is helping to provide sustainable access to food, water, shelter, medical care, and primary education for communities here, in Michigan, and around the world. This work is needed now more than ever.

This is why I want to encourage you not to withdraw from our common relationships represented by the projects and mission personnel in this book. Now is not the time to withdraw; now is the time to review, re-imagine, and reform these relationships. My hunch is the denominational dust will not settle for several more years. So in the meantime, I encourage you to support these basic, humanitarian ministries.

I also encourage you to hold fast, because God's call to mission is steadfast. God's love for those whose lives are truly precarious is truly faithful. God's connection of complex, messy, conflicted relationships is a sure foundation for whatever dream God maybe dreaming for what comes next.

Peace,

The Rev. Paul Perez  
*Director of Connectional Ministry*





# Steps to Becoming an “Engage<sup>mi</sup> Congregation”

## LEARN

Congregation engages in at least one learning experience that:

- deepens understanding of “ministry with”
- listens to people directly affected by the issues you are seeking to address
- increases understanding of root causes of systemic injustice

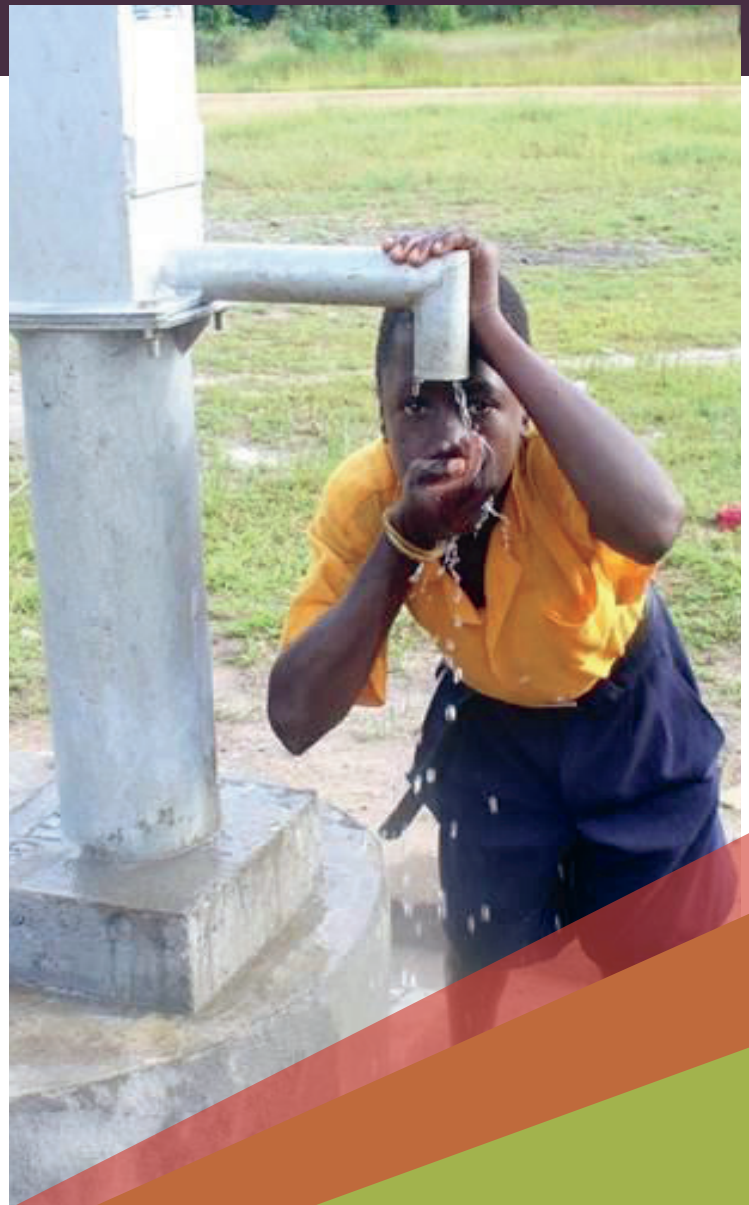
## GIVE

Congregation engages in comprehensive missional and connectional giving by meeting the requirements of the following steps:

- **Step 1: 100% of Michigan Conference Ministry Shares**
  - Give 100% of Michigan Conference Ministry Shares
- **Step 2: Michigan**
  - Give to at least one Conference Project or Michigan Conference Special Sunday
  - Give to at least one District Project
- **Step 3: National**
  - Give to at least one U.S. General Advance Project or listed Special Sunday



# LEARN GIVE ACT



## • Step 4: International

- Give to at least one International General Advance Project or Special Sunday
- Give to at least one Haiti General Advance Project
- Give to at least one Liberia General Advance Project

## • Step 5: Mission Personnel

- Give support to at least one Mission Personnel

## • Step 6: United Methodist Committee on Relief (UMCOR)

- Give to at least one UMCOR General Advance Project or UMCOR Special Sunday

## ACT

Congregation engages in at least one action that:

- intentionally honors the sacred dignity and intrinsic worth of every person who participates in the missions and ministries of your congregation
- builds relationships with a local, national, or international project
- addresses root causes of systemic injustice.



# LEARN

## Goal:

Goal: Congregation engages in at least one learning experience that:

- Deepens understanding of "ministry with"
- Listens to and learns from the real lives of vulnerable, different people and communities
- Increases understanding of root causes of systemic injustice

Even during the current pandemic and institutional uncertainty, God's presence and call to mission remain steadfast. Now is not the time to withdraw; now is the time to review, re-imagine and pray our way to new approaches for engagement in mission.

Given current restrictions on in-person gatherings, **Engage<sup>mi</sup>** encourages congregations to use Learn-Give-Act steps as Spirit-led catalysts for prayerful, playful, creative conversations and ministries that are unique to your faith community.

### Suggestions to get started:

- Gather a diverse group – not only the Missions Team - for a Zoom conversation about **Engage<sup>mi</sup>** (be sure to include youth)
- Prior to the conversation, ask participants to read at least pages 1-10 of the **Engage<sup>mi</sup>** program book
- During the Zoom meeting, pray, think, imagine and talk about what excites the group and how Learn-Give-Act goals might be adapted to life during the pandemic

### Learn examples:

- Ask for youth volunteers to visit the [umcmmission.org](http://umcmmission.org) website and report back with ideas that excite them
- Invite anyone to attend "Still In Mission" Zoom Events to connect with UM missionaries around the world <https://www.umcmmission.org/learn-about-us/events> with a brief report to the congregation
- Invite all to visit [www.umcjustice.org](http://www.umcjustice.org) and to attend General Board of Church and Society Town Hall meetings to dismantle racism (August 2020). Invite anyone to send a brief written report to the Missions Team or newsletter
- Have a young person or adult send an email with a few meaningful questions (pen pal style) to a General Board of Global Ministries Missionary <https://www.umcmmission.org/serve-with-us/missionaries> or Mission Intern <https://www.missionintern.org/>
- Invite anyone to read a book, write a brief review, and send to 10 people in the congregation and 3 outside it. <https://www.unitedmethodistwomen.org/readingprogram>
- Form a pop-up book group to read a book and discuss via Zoom. Report to the congregation what the experience was like and invite others to form more groups

Be creative, be joyful in Christ, stay connected, and become an **Engage<sup>mi</sup>** congregation!

Below are suggested resources: Video Curriculum, Hosting Speakers, and Downloads and Books. More information for each resource can be found at: [www.michiganumc.org/missions/engage-mi/learn](http://www.michiganumc.org/missions/engage-mi/learn)

## MICHIGAN CONFERENCE LEARNING EVENTS

### Keep Making Peace

(contact the Board of Justice)

### United Methodist Women's Mission u

([www.umwmichiganconference.org](http://www.umwmichiganconference.org))

### Volunteer In Mission & Emergency Response Team Trainings

(contact VIM & Disaster Response Coordinators)

## VIDEO CURRICULUM

### Seeking Shalom from the Lupton Center

[www.luptoncenter.org/seekingshalom/](http://www.luptoncenter.org/seekingshalom/)

### Engaging Local Schools from the Lewis Center for Church Leadership

[www.churchleadership.com](http://www.churchleadership.com)

### Doing Good Well from the Lewis Center for Church Leadership

[www.churchleadership.com/product/doing-good-well-download/](http://www.churchleadership.com/product/doing-good-well-download/)

### Taking Church to the Community from the Lewis Center for Church Leadership

[www.churchleadership.com](http://www.churchleadership.com)

## HOST A SPEAKER FROM A CONFERENCE OR DISTRICT CHRIST CENTERED MISSION and MINISTRY PROJECT

Consider hosting a speaker or presentation from one of the Conference or District CCMM Projects. Find a listing of projects and their contact information here: <https://michiganumc.org/missions/ministry-partners/step-2-michigan/>

## HOST MISSION PERSONNEL VISITING MICHIGAN

Throughout the year Mission Personnel visit, or "itinerate," Michigan to share about their ministry and to build partnerships with Michigan United Methodists. Consider hosting visiting mission personnel at your congregation.

Contact The Rev. Julie Elmore, Conference Secretary of Global Ministries. 517-607-6977, [jyelmore@gmail.com](mailto:jyelmore@gmail.com)

## RESOURCES & BOOKS

*"Ways to Raise Your Poverty IQ"* by Circles Grand Rapids

*Discovering The Other: Asset-Based Approaches for Building Community Together* by Cameron Harder

*Doing Justice: Congregations and Community Organizing* by Dennis A. Jacobsen

*Friendship at the Margins: Discovering Mutuality in Service and Mission* by Christopher L. Heuretz and Christine D. Pohl

*Grace Under Pressure: Negotiating the Heart of the Methodist Traditions* by Joerg Rieger

*Tattoos on the Heart: The Power of Boundless Compassion* by Gregory Boyle

*Walking with Nehemiah: Your Community Is Your Congregation* by Joseph W. Daniels, Jr.

*When Helping Hurts: Alleviating Poverty Without Hurting the Poor* by Steve Corbet and Brian Fikkert





# GIVE

## STEP 1: 100% of Michigan Conference Ministry Shares

United Methodists in Michigan give more than \$14 million each year to mission and ministry. These gifts are known as, "Ministry Shares," because we share some of the gifts God has blessed us with. Ministry Shares are assigned by the Conference as the church's fair share of the common ministry. Together we support the work of the United Methodist Church in mission and ministry. These gifts provide vital support to a wide range in ministry and mission in Michigan and around the world.

Ministry Shares are divided between 2 large groups of funds, Conference Ministry Shares and General Church Apportionments. These funds are further broken down into 3 funds under Conference Ministry Shares and 7 funds under General Church Apportionments.

Conference Ministry Shares are the funds which 1) provide resources and services to local churches and their members and 2) operate the conference. They make up approximately 75% of the Conference Budget. The three funds included in Conference Ministry Shares are: Conference Benevolences, Clergy Support, and Administration.

General Church Apportionments make up approximately 25% of the Conference Budget. These are seven funds that make up the General Church Apportionments: World Service Fund, Africa University Fund, Black College Fund, Interdenominational Cooperation Fund, Episcopal Fund, Ministerial Education Fund, and General Administration Fund. You can find detailed information on all of these funds at [www.umcgiving.org](http://www.umcgiving.org).

To become an Engage<sup>mi</sup> Congregation, your local church must give 100% of its assigned Michigan Conference Ministry Shares. For more information about Conference Ministry Shares, visit [www.michiganumc.org/stewardship/](http://www.michiganumc.org/stewardship/)

# STEP 2: Michigan

Give to

- At least one Conference Project or Conference Special Sunday
- At least one District Project

## Conference Projects

### CHRIST CENTERED MISSION & MINISTRY GIFT

CCMM# 3037

A general gift may be given in lieu of selecting a specific project. Funds given will be used to build capacity and sustainability of Conference Christ Centered Mission & Ministry projects in the Michigan Annual Conference.

### ASBURY COMMUNITY DEVELOPMENT CORPORATION CCMM#3003

Asbury is the light and hands of Christ burning bright on Flint's Eastside, a neighborhood devastated by toxic water, violence, poverty, and hopelessness. The Asbury Farm is providing lead-mitigating produce. Asbury's Neighborhood Connect Ministry is providing water resources including filters to residents unable to drive to our Help Center which offers food and health services. God is on the move in Flint.

### BALDWIN CENTER

CCMM# 3036

Their mission is to feed, clothe, educate and empower the men, women and children of the Pontiac community. They offer more than 25 programs that meet basic needs, give assistance in a crisis, provide education and enrichment opportunities, and serve as a safety net. Among these services are soup kitchen, clothes closet, holiday store & baskets, laundry, after school program, summer enrichment camp, hygiene items, etc. They are connecting and training partner agencies to increase client empowerment through 'Innovative Frameworks'.

### CASS COMMUNITY SOCIAL SERVICES

CCMM#3005

Cass Community Social Services offers programs to people living in areas of concentrated poverty in Detroit. The four program areas are: food, health/mental health care, housing and employment.

### CHILDREN DEFENSE FUND FREEDOM SCHOOLS PROGRAM

CCMM#3049

Children's Defense Fund Freedom Schools is a six-week summer literacy and cultural enrichment program designed to serve children and youth in grades K-12 in communities where quality academic enrichment programming is limited, too expensive, or non-existent. CDF Freedom Schools inspire, engage and ignite 'scholars' to learn and dream in a safe place, valued and supported by caring adults, at no cost to their families. Using an integrated reading curriculum, songs and chants during the Harambe (come together) opening assembly and field trips children engage in reading, community involvement, and multi-generational leadership development. Current Michigan Conference related sites are: Detroit: Second Grace UMC, Flint: Bethel UMC, and Flint: Calvary UMC.

## **CIRCLES GRAND RAPIDS**

**CCMM#3009**

Circles GR is a Chapter of Circles USA, whose mission is to inspire and equip persons from every economic class to permanently reduce poverty. We connect people across socioeconomic lines in long-term friendships that offer collaborative guidance for families working to exit poverty while raising the "poverty IQ" of the middle- to upper-income allies who accompany them. Circles provides ongoing training and support for cross-class relationships of mutual growth focused on the goals of those working to exit poverty, and transforming the lives of individuals, organizations, and communities.

## **CLARK RETIREMENT COMMUNITY, INC.**

**CCMM#3038**

Philanthropy is a major component of many services provided to their residents and supported through the generous gifts of donors. The Clark Foundation gives opportunities to support the mission of Clark, primarily through gifts to Benevolent Care which provides financial support to those residents who, through no fault of their own, have depleted their financial resources. Other services include the Montessori program, Music Therapy, and many life enrichment activities.

## **COMMUNITY MINISTRIES PROGRAM**

(at Grand Rapids: Trinity United Methodist Church)

**CCMM#3006**

The Community Ministries Program creates new and engaging partnerships that build strong community networks. These networks create safe places for children, individuals and families to learn and grow. We host important community conversations, provide accessible trainings and workshops, bring in guest speakers, partner with special needs organizations, create after-school opportunities for children and youth and coordinate special projects that bring churches together to serve underserved populations.

## **CONFERENCE EMERGENCY PREPAREDNESS & DISASTER RESPONSE**

**CCMM#3007**

Provides training, and encourages persons to respond for early recovery and reconstruction after a disaster. They provide a caring, Christian presence after a disaster and with UMCOR provide

a training curriculum to assist the local church in preparing for emergencies and during various phases of disaster.

## **FLINT RECOVERY**

**CCMM#3046**

A program supporting the stabilization and restoration of Flint through programs focused on lead-mitigating nutrition, violence prevention, educational empowerment, and family continuity.

## **FREE STORE OF KALAMAZOO (SUNNYSIDE UMC)**

**CCMM#3048**

The Free Store seeks to achieve its mission through a lens of antiracism by dismantling structures which elevate a dominant white Christian narrative over and above a more faithful narrative that asserts a God who begins on the margins of society. Staff and key leaders participate in antiracism training, and the Leadership Board is committed to upholding antiracist values of collaborative work, transparency, both/and thinking, and abundance as we seek to deepen relationships in the community and provide clothing and household items to all persons without exceptions.

## **FRESH AIRE SAMARITAN COUNSELING CENTER**

**CCMM#3008**

Fresh Aire's mission is to provide affordable, high-quality, short and long-term counseling, life coaching, education/support/recovery groups, and consultation to promote "wholeness of mind, body and spirit." With offices in Midland, Saginaw and Bay City, our vision is "Enriching lives and restoring hope and vitality, in a spiritually inclusive manner, throughout mid-Michigan and the Great Lakes Bay Region." As a non-profit, Fresh Aire seeks to resource individuals, couples, families and groups/churches at a fee that is affordable for all.

## **GOD'S COUNTRY COOPERATIVE PARISH**

**CCMM#3044**

God's Country Cooperative Parish (GCCP) is comprised of seven churches spread over 250 square miles in the eastern part of the Upper Peninsula of Michigan. The seven churches combine their resources, share their faith, and actively work to bring self-esteem, hope and the love of God to all throughout the Parish. GCCP hosts mission teams in the summer to do home repairs and improvements in our communities and coordinates food and clothing distribution.



## **HOLTON COMMUNITY CENTER**

**CCMM#3011**

Holton Community Center extends the right hand of Jesus Christ allowing the Holy Spirit to touch the hearts of all we encounter. It is a Food Pantry in the remote impoverished area of northern Muskegon County. Donations help to provide meat, fresh fruit, vegetables and other food items. They also ensure we can continue to offer bible studies, Money Managements Classes and classes that help folks learn who God created them to be while understanding they are deeply loved and here with great purpose. The Holton Community Center is a healing place, the only 'church' some folks know.

## **JOY SOUTHFIELD COMMUNITY DEVELOPMENT CORPORATION**

**CCMM#3012**

Joy-Southfield CDC was founded by Second Grace UMC in 2001 and serves the far west side Detroit. Forty percent of the residents in the community live below the federal poverty level and many are single parents or elderly. Joy-Southfield is dedicated to providing primary health care (through our partnership with Covenant Community Care) to low income and uninsured families and individuals; preventative health care education; free or low-cost home repairs for low-income, single-family homeowners; youth and family mentoring; and local economic development including better business to community relationships and commercial corridor revitalization. Joy-Southfield works closely with ACCESS CDC which has an Arab American heritage and other local organizations to provide additional community-building and services to all those in need. Joy-Southfield hosts adult and youth work teams for housing repairs and other community needs and is always in need of operational support.

## **JUSTICE FOR OUR NEIGHBORS –**

**MICHIGAN CCMM#3013**

Welcoming immigrants and refugees by providing legal assistance that aspiring residents need but cannot afford or access. Through our attorneys, we help immigrants understand their choices and navigate the complexities of the legal system. Through our extensive volunteer corps, we create a welcoming community that honors immigrants as fellow human beings.

## **LIBERIA MINISTRY PARTNERSHIP**

**CCMM#3014**

The Liberia Ministry Partnership works to support and extend the covenant relationship between the

people of the Michigan Annual Conference and the Liberia Annual Conference.

## **MAPLE VALLEY COMMUNITY CENTER OF HOPE**

**CCMM#3015**

MVCCH is a UMC related agency that feeds the hungry and clothes the needy in Nashville, Vermontville and Woodland, MI. A weekly box of food is given to those who meet IRS Poverty Guidelines. The Free Store provides clothing and housewares. Hope for Babies provides diapers and wipes. Nurse Services provides blood pressure checks and listens to those with health concerns. Hope for Education provides life skills classes to help these people break free from the cycle of poverty.

## **METHODIST CHILDREN'S HOME SOCIETY**

**CCMM#3016**

MCHS provide individualized treatment, care, advocacy, and permanency to children and families impacted by childhood trauma. Through our residential, transitional living, foster care, and adoption programs, as well as our educational and clinical services, we provide for and advocate on behalf of victims of child abuse and neglect.

## **MICHIGAN AREA UNITED METHODIST CAMPING**

**CCMM#3017**

Michigan Area United Methodist Camping engages today's children, youth and adults with the powerful message of love and redemption through Jesus Christ. Scholarship funds are needed to give campers a break from the plugged-in, fast-paced life at home and immerse them in God's creation. They learn life skills living outdoors and a different sort of ABCs – like Archery, Bible Study, Canoeing. They grow as disciples alongside spiritual mentors and build lasting relationships with peers. Capital investments are also needed to maintain site facilities for this generation and the next. Sites include Lake Huron Retreat Center (Burtchville), Lake Michigan Camp & Retreat (Pentwater), Lakeview Family Campground (Lakeview), and Wesley Woods Camp & Retreat Center (Dowling).

## **MICHIGAN-HAITI COVENANT PARTNERSHIP**

**CCMM#3035**

The Michigan-Haiti Covenant Partnership works to support and extend the covenant relationship between the people of the Michigan Annual Conference and the people of the Methodist Church of Haiti.

## **MICHIGAN STATE UNIVERSITY WESLEY CAMPUS MINISTRIES**

**CCMM# 3040**

MSU Wesley Campus Ministries is a Christian Community of young adults that loves without exception, serves without judgment and rejoices without restraint. Students engage a mission field of young adults from Michigan State University, Lansing Community College and Greater Lansing. Raising principled leaders for the church and for the world is at the core of our mission. They do this by establishing a diverse and trusting faith community where students can stretch and grow in the knowledge and love of God via disciplined practice and intentional Christian Community.

## **MISSION FOR AREA PEOPLE**

**CCMM#3018**

Mission for Area People (MAP) is a non-profit, faith based agency dedicated since 1967 (53 years) to serving the poor and underserved residents of Muskegon County. MAP serves as the collaborative, coordinating agency between local partner churches and the community (agencies, other ministries, government, and schools) to provide effective, coordinated help for the disadvantaged through its healthy choice food pantry, clothing pantry, medical support fund, educational nutrition classes, car repair for low-income working families and rent and utility assistance. Located in the heart of Muskegon Heights, MAP most frequently serves minority populations in the urban areas; however, all that request and qualify for assistance are served.

## **MISSION INTERN PROGRAM**

**CCMM#3039**

The Mission Intern Program, a ministry of the Michigan Annual Conference, encourages young adults to explore servant ministry for a summer. Interns work to provide summer programming for children and youth in rural and urban areas.

## **MOTOR CITY WESLEY**

**CCMM#3019**

MCW engages and invests in student-led missional communities exploring their Christian faith through action and innovation around Detroit.

## **MOTOWN MISSION**

**CCMM#3020**

Motown Mission provides short term mission and service learning opportunities that are intentional and tailored to the needs of our partners and volunteers. We strive to do ministry alongside our neighbors and engage in the work it takes to do short term mission in holistic ways. We hire college-aged summer staffers who participate in leadership development and spiritual discernment.

## **NEW CHURCH DEVELOPMENT FUND**

**CCMM#3033**

The New Church Development Fund is used to fund start-up costs for new faith communities. We will utilize a variety of models in creating new faith communities. To provide "Bold and Effective Leaders," the conference will recruit, assess, and train pastors and lay leaders to start new faith communities.

## **NEW WORSHIP SERVICE FUND**

**CCMM#3034**

The New Worship Service fund will assist local churches determine what kind of worship services are needed to reach their mission field and provide start-up money to launch a new service to reach new people.

## **NEXT GEN: MINISTRY WITH 2ND AND 3RD GENERATION LATINOS**

**CCMM#3010**

This ministry supports ministries with 2nd and 3rd generation Latinos. The ministries include Latinxt Academy (formally Hispanic Youth Leadership Academy), Vacation Bible Schools, Summer Programs, Family Camps, Leadership Bridge Events, and more. Our vision is to create faithful Christian leaders that will have a positive impact in their communities and churches.

## **THE NOAH PROJECT**

**CCMM#3028**

The NOAH Project operates a Community Center in downtown Detroit for homeless and low income individuals. We use our Bag Lunch Program as the beginning of a trusting relationship with our clients. NOAH provides case management, wellness counseling, a computer lab, an art program, a

quarterly Earn-A- Bike Program, and quarterly dental clinic. The mission of NOAH is to empower low income and homeless Detroiters to achieve stability by serving as the first step on the journey to self sufficiency.

## **NORTH END COMMUNITY MINISTRIES**

**CCMM#3021**

North End Community Ministry (NECM) is a non-profit, community service ministry providing 6 programs/services for people in need on the NE side of Grand Rapids, MI. The majority of programs/services we provide are food related, as NECM feels that humans have a basic right to access food at no cost. Our largest program is a client choice food pantry serving over 700 families per month through its network partnership with Access of West Michigan. Ministry in action is not only providing food, but building relationships and equipping people with skills through our educational classes.

## **PATHFINDERS**

**CCMM#3022**

Pathfinders, "I am the Village" is an afterschool program whose main purpose is to create an environment that is safe and all-inclusive for youth 8-18 years of age. The emotional, social and physical development of youth has a direct impact on the adult each child will become. The Village helps to create the environment that every child needs in order to do better. Such as a safe environment, a safe neighborhood, stronger families and a supportive community in hopes that every child has equal footing to be successful. The village can offset the impact of poverty and risk factors that create roadblocks along the way. Pathfinders feed kids every day, give survival bags for the weekend, and identify scholastic needs, especially as it relates to literacy. We also collaborate with behavior health specialist to help youth deal with the stress of school, home and life. Pathfinders also provides personal hygiene items, so we can address self-dignity and esteem. We engage, we empower and we motivate every child.

## **PA WA TING – NATIVE AMERICAN ELDERS PROGRAM**

**CCMM#3023**

Pa Wa Ting is an outreach program to Native American Elders and their families. It provides meals, health screenings, information & referral, pastoral care, counseling, social connection, volunteer opportunities, transportation & Community Service opportunities through the court system.

## **REDFORD BRIGHTMOOR INITIATIVE**

**CCMM#3024**

The Redford Brightmoor Initiative is a nonprofit organization in service to the neighborhoods of Brightmoor (Detroit) and Redford, Michigan. They are committed to resident engagement and providing basic amenities.

## **SAMARTIAN COUNSELING CENTER OF SOUTHEASTERN MICHIGAN**

**CCMM#3050**

Since 1986, Samaritan Counseling Center of Southeastern Michigan has offered access to hope and healing to all God's people through high quality, spiritually integrated psychotherapy, and through education.

## **SPIRIT JOURNEY**

**CCMM#3041**

Spirit Journey is a ministry that empowers Native American youth ages 8-14 to reach their God given potential by currently offering summer programming. This includes Basketball Camp, 3 Gus Mack 3 on 30 basketball tournaments in Ludington, Belding, Sault Ste. Marie, Day trips around the Grand Traverse Region, Writing Camp at Pictured Rocks, Weeklong overnight camp at Northport Indian Methodist Campground in Northport, MI and a weekend trip to Cedar Point for our junior counselors.

## **SOUTH END COMMUNITY OUTREACH MINISTRIES (SECOM) RESOURCE CENTER**

**CCMM#3026**

At SECOM Resource Center we strive to live out our Vision, "helping today, building hope for tomorrow" on a daily basis. SECOM primarily serves households in the 49507 zip code, an area that has one of the highest poverty levels in Kent County. We provide help today through our Healthy Food Pantry and Little Steps Preschool. Hope for tomorrow is offered through nutrition education programs, assistance with employment and benefits applications, advocacy, empowerment initiatives, and volunteer and community engagement opportunities.

## **SOUTH LANSING MINISTRIES**

**CCMM#3027**

We have a food bank (serving from 275-350 people per month), personal needs closet, computer bank, garden project, kids reading corner, information and referral, and a new Community Builders program in a local elementary school. This project is designed to create community, teach young people how to use their voice and problem solve. We will be duplicating and expanding Community Builders in the next year. We also have a weekend food program for kids, and have many volunteers going to the Greater Lansing Food Bank to pack and sort.

## **SWORDS INTO PLOWSHARES PEACE CENTER & GALLERY**

**CCMM#3001**

The Swords Into Plowshares Peace Center and Gallery, located at Detroit: Central UMC, is Southeast Michigan's unique location for peace and justice related art exhibits as well as a location for a number of peace-related events. The Gallery also has a gift shop featuring books, cards and artwork that can be purchased.

## **UNITED METHODIST COMMUNITY HOUSE**

**CCMM#3029**

UMCH has been a venerable, trusted resource in Grand Rapids, providing expansive services for everyone from infants to senior citizens in a warm, inclusive, multi-cultural atmosphere since 1902. UMCH programs are divided into four core focus areas: Child Development, Youth Development, Adult Programs, and Senior Programs.

## **UNITED METHODIST RETIREMENT COMMUNITIES (UMRC) FOUNDATION**

**CCMM#3030**

UMRC has been a leader in innovative senior care since 1906, offering Michigan's most diverse housing options and services to older adults of all income levels. The UMRC Foundation was created in 1998 to help keep our faithful founders' promise of Benevolent Care for qualified residents who outlive their resources. As the senior population continues to grow, your gifts to the Benevolent Care Fund help ensure that our residents always have a home where they are loved and treasured.

## **UNITED METHODIST URBAN YOUTH ALLIANCE**

**CCMM#3051**

The United Methodist Urban Youth Alliance creates a safe, dynamic, open space for urban youth to become leaders. Specifically, we exist to: provide a safe, structured, nurturing environment for urban youth; bring urban youth into full connection within the United Methodist Church; revitalize urban churches; address the particular and unique needs of urban youth, and make new disciples of Jesus Christ for the transformation of the world.

## **WESLEY AT CENTRAL MICHIGAN UNIVERSITY**

**CCMM# 3042**

Wesley@CMU is an open, authentic community building disciples of Jesus Christ for the transformation of the world. A wide variety of weekly and special events builds community among Christians, those of other faiths, and those with no faith, drawing people in to Christian worship and study. Intentional leadership development for Christians helps incoming freshmen become effective leaders of the program and in the church before graduation. Their Leadership Residence houses up to 8 students in an intentional Christian community.

## **WESLEY FELLOWSHIP AT GRAND VALLEY STATE UNIVERSITY**

**CCMM#3031**

Wesley Fellowship at Grand Valley offers a place where students can learn about and follow Jesus Christ in a non-judgmental, inclusive, and welcoming environment. We help students learn

how their faith connects to the rest of their lives- including their career choices and their social justice concerns. In the tradition of the United Methodist Church, we offer thoughtful Bible study, spiritual formation, and opportunities to put one's faith into action.

## **WESLEY FOUNDATION OF FERRIS STATE UNIVERSITY**

**CCMM#3032**

Ferris Wesley House is a campus ministry that ministers to the Ferris State University campus and community. They build strong leaders by involving students in leadership through the campus ministry, in local churches and on campus.

## **WESLEY FOUNDATION OF KALAMAZOO**

**CCMM# 3043**

Wesley of Kalamazoo is the United Methodist campus ministry serving Western Michigan University, Kalamazoo College, and Kalamazoo Valley Community College. Wesley welcomes all persons through a variety of invitational and hospitable events and ministries, affirms all person through the reconciling and anti-racism practices, equips all persons through discipleship, acts of mercy and works of justice, challenges all persons through leadership development based on grace and mutual accountability. Wesley houses nine young adults in an intentional living community and serves an average of 144 students annually.

## **WESLEY FOUNDATION AT THE UNIVERSITY OF MICHIGAN**

**CCMM#3047**

The Wesley Foundation at the University of Michigan is a United Methodist campus ministry providing varied opportunities and programs for all students and other campus-related persons. We are a pluralistic community academically, theologically, and by age and interest. All students from nearby universities such as University of Michigan, Eastern Michigan University, Concordia University, and Washtenaw Community College are welcome. We are also a community of persons committed to caring, sharing, serving, learning, and growing with each other regardless of ethnic origin, gender, sexual orientation, marital or economic status, disability, or other human differences. Our common bond is God's love shown through Jesus Christ. Our emphases include concern for the social implications of the gospel in the world and personal growth as Christians.

## **District Projects**

Please give to at least one project in your District. Please send funds directly to the District Project.

### **CENTRAL BAY DISTRICT**

#### **The Ezekiel Project**

Make checks payable to the Ezekiel Project  
4392 Ann Saginaw, MI 48603  
Contact: Rev. Doug Leffler  
Mdleffler@sbcglobal.net

#### **The Good Samaritan Fund of Caro Churches**

Make checks payable to Good Samaritan Fund of Caro Churches  
529 Pearl St. Caro, MI 48723  
Contact: Bernard Kreh  
Budola@charter.net

#### **Oscoda Indian Mission**

Make checks payable to Oscoda Indian Mission  
PO Box 102 Hale, MI 48739  
Contact: Amy Alberts  
amyfaithalberts@juno.com

#### **One Week, One Street**

Make checks payable to One Week, One Street  
New Beginnings Enrichment Center  
2609 E. Genesee Saginaw, MI 48601  
Contact: Tamara Klida  
989-662-4245  
Oneweekonestreet@aol.com

#### **West Branch UMC – GAP Kids**

Project Mission Statement: G.A.P. (God's Awesome People) Children's Ministries shares Jesus's story with children going into first through sixth grades and their families. We do this with week-long programs for spring and winter school breaks and a six week program in the summer months. These programs provide structured activities, bible study, enrichment opportunities, and meals.  
Project Vision Statement: We share God's love and Jesus's story with area children and their families inviting them to become disciples of Jesus Christ.  
Make checks payable to West Branch UMC with memo: GAP Kids  
2490 West State Rd. West Branch, MI 48661  
Contact: Linda Hall  
989-345-0219  
hall4thee@gmail.com

**West Branch First United Methodist -  
Prayer Shawl Ministries**

Project Mission Statement: We will provide tangible love and caring to people in need of prayers, whether it be grief, sickness, joy, or struggles.

Project Vision Statement: We hope to make a difference in the small world around us by wrapping individuals in our shawls to bring peace and comfort. The gift will show people how much we care and make them feel loved both now and in the future.

West Branch First UMC  
2490 West State Rd. West Branch, MI 48661  
Pastor: Timothy Dibble  
Contact: Ellen Pugh

**One Week/One Street**

Project Mission Statement: Loving our neighbors through neighborhood revitalization

Project Vision Statement: Demonstrating the love of Christ by meeting the needs in struggling communities with exterior home improvements that increase safety, home values, and visual appeal.

Auburn UMC  
207 S. Auburn Rd. Auburn, MI 48611  
989-662-6314  
Pastor: Rob Nystrom  
Contact: Tamara Klida  
989-662-4245

**New Heart UMC**

Project Mission Statement: Our missions is to serve the broken and lost in the city of Saginaw by offering the love, hope, and transforming message of salvation found in Jesus Christ.

Project Vision Statement: Seeking to unify and empower the Body of Christ, through Mission Outreach, support, and implementation in a community setting.

New Heart UMC  
1802 W. Michigan Ave. Saginaw, MI 48602  
989-792-4689 or cell 989-839-4798  
Pastor: Melene Wilsey  
Contact: Emmet Green  
989-297-3439

**EAST WINDS DISTRICT**

**Cros-Lex Project Blessing**

Makes checks payable to: Cros-Lex Project Blessing  
5646 Main St. Lexington, MI 48540  
Contacts:

Wayne Bank, waynebank@sbcglobal.net  
Brian Jackson, jacksondot68@sbcglobal.net

**Family Promise of Genesee County (FPGC)**

Make checks payable to: Family Promise of Genesee County  
P.O. Box 4519, Flint, MI 48504  
Contact: Kris Burns- info@familypromiseofgc.org  
www.familypromiseofgc.org

**Mobility Worldwide East Michigan  
(Formerly PET MI EAST MICHIGAN)**

Make checks payable to:  
Mobility Worldwide East Michigan.  
5011 Cecelia Ann Ave. Clarkston, MI 48346  
Contact: David Kauffman- dkauffyman@yahoo.com

**The South Flint Soup Kitchen**

Make checks payable to: East Winds District,  
(memo: The South Flint Soup Kitchen)  
C/O Linda Squires, EWD Treasurer –  
119 S. Leroy Street, Fenton, MI 48403  
Contact: Rev. Maurice Horne  
pastorhorne55@yahoo.com  
www.southflintsoupkitchen.org

**Blue Water United Methodist Free Store**

Make checks payable to: BWUMFS  
3842 Lapeer Rd, Port Huron, MI 48060  
Contact: Tom Masters- bwministrycenter@gmail.com

**Blue Water Ministry Center**

Make checks payable to: East Winds District  
(memo: Blue Water Ministry Center)  
c/o Linda Squires, EWD Treasurer –  
119 S. Leroy Street, Fenton, MI 48403  
Contact: Tom Masters – bwministrycenter@gmail.com

**GREATER DETROIT DISTRICT**

**Centro Familiar Christiano UMC Children's  
Programming and English as a Second Language**

Make checks payable to Centro Familiar Christiano UMC  
Memo: Children & ESL  
1207 Waterman St, Detroit, MI 48209  
Contact: Patricia Gandarilla Becerra,  
carpagabe@gmail.com

**Greater Detroit District Food Pantry Network**

Make checks payable to Greater Detroit District:  
Memo: Food Pantry Network  
8000 Woodward Avenue, Detroit, MI 48202  
Contact: Vivien Green – erdie1947@aol.com

### **Hands 4 Detroit**

Make checks payable to Greater Detroit District:  
Memo: Hands 4 Detroit  
8000 Woodward Ave, Detroit, MI 48202  
Contact: Audrey Mangum,  
amangum@greaterdetroitumc.org, 912-432-3001

### **People's IALAC Summer Children's Program**

Make checks payable to Peoples IALAC Summer Program c/o Peoples United Methodist Church  
19370 Greenfield Road, Detroit, MI 48235 Contact:  
Gladys Stallings, gladys@synctech.com

### **Rochester Area Neighborhood House**

Make checks payable to Rochester Area Neighborhood House:  
1234 Inglewood Rochester, MI 48307  
Contact: Linda Riggs, director@rahn.org

### **United Methodist Urban Youth Alliance**

Make checks payable to Greater Detroit District:  
Memo: UM UrbanYouth Alliance  
8000 Woodward Ave, Detroit, MI 48202  
Contact: Audrey Magnum  
amagnum@greaterdetroitumc.org, 313-481-1045  
www.umuya.org

### **GREATER SOUTHWEST DISTRICT**

**Wesley Woods Bathhouse** - Replacement of the 50+ year old bathhouse at Wesley Woods United Methodist Camp in Dowling, Michigan. Completion of this project will serve over 500 children and youth who attend Wesley Woods each summer.

**ABCD at Milwood UMC** - An asset based community development ministry with persons who are food and education insecure in the Milwood and Edison neighborhoods of Kalamazoo with a focus on ministries with children.

**Rural Outreach Project** - A grant fund for District churches in rural areas and towns with under 10,000 population. Funds are to be used for new and ongoing outreach and ministry efforts and will be awarded to churches submitting an application.

**JFON-Kalamazoo** - Justice For Our Neighbors welcomes immigrants and refugees living in Southwest Michigan by providing legal assistance that those seeking residency in the United States need but cannot afford or access.

### **To support these ministries send your check to:**

Greater Southwest District ENGAGE, PO Box 1333, Portage, MI 49081. Designate the project to receive support in the memo line of the check.

### **HERITAGE DISTRICT**

#### **Belleville FUMC Emergency Food Closet**

Make checks payable to: Belleville FUMC, memo: Emergency Food Closet  
417 Charles St. Belleville MI 48111  
Contact: Marilyn Wood, 734-697-9288  
bellevilleumc48111@yahoo.com  
bellevillefirstumc.org

#### **Wellness Team-First United Methodist Church of Jackson: Community Food Ministry**

Make checks payable to: First UMC of Jackson, memo: Community Food Ministry  
275 West Michigan Ave Jackson, MI 49201  
Contact: Fran Adams, 517-787-6460  
church@firstumcjackson.org  
www.firstumcjackson.org

### **MID-MICHIGAN DISTRICT**

The Mid-Michigan District has not named District Projects. Please select a Conference Project that is within the Mid-Michigan District.

**Thrive: A Refugee Support Program**

Make checks payable to: Thrive  
3334 Breton Rd SE Grand Rapids, MI 49512  
Rev. Marcia Elders, 616-421-2500  
thrivegr.office@gmail.com

### **MIDWEST DISTRICT**

#### **Refresh: Hygiene Hope**

Make checks payable to: Holland First UMC, memo: Refresh  
57 W. 10th St. Holland MI 49423  
Contact: Rev. Luanne Hook, 616-396-5202  
luanne@fumcholland.org  
https://fumcholland.org/serve

#### **Thrive: A Refugee Support Program**

3334 Breton Rd SE Grand Rapids, MI 49512  
Rev. Marcia Elders, 616-421-2500  
thrivegr.office@gmail.com

## **NORTHERN SKIES DISTRICT**

### **Camp Michigamme Development**

Make checks payable to Camp Michigamme  
3667 US 41 Michigamme, MI 49861  
Contact: Erica Thomas (906) 323-6521  
registrar@campmichigamme.org

### **Northern Skies District Mission of the Year**

Make checks payable to Northern Skies District  
Memo: Mission of the Year  
927 W. Fair, Marquette, MI 49855  
Contact: Diana Byar 906-228-4644  
dbyar@michiganumc.org

### **Wesley at Northern Michigan University**

Make checks payable to Maquette: Hope  
UMC with memo: "Wesley NMU," 111 E Ridge St  
Marquette, MI 49855  
Erica Thomas, 805-710-4752; wesley@mqthope.com.

### **Zeba Indian Mission**

Make checks payable to "Zeba Indian Mission,"  
227 N. Front St., L'Anse, MI 49946, 906-524-7939,  
lumc@up.net.

## **NORTHERN WATERS DISTRICT**

### **Missaukee County Cooperative Ministries; Lake City**

This is a ministry of many churches, agencies and  
businesses aligning community responses with  
people's needs.

Contact: Victoria Hiddinga  
231.839.4485 or the alternative contact:  
Rev. Jean Smith, Lake City UMC. 231.839.2123  
Donations may be sent to Missaukee County  
Cooperative Ministry  
6180 W. Sanborn Rd, Lake City, MI 49651

### **North Country Cooperative Parish (NCCP): Roscommon**

North Country Cooperative Parish (NCCP) is a  
Christian group established in 2016. NCCP's  
mission is Churches working together in ministry  
by providing cost free home repairs for those  
needing help, church building repairs, and barrier  
free access. Sample projects include new roofs,  
siding repairs, or wheelchair ramps.

For more information, contact Parish Council Chair,  
Dave Gentry: morki74@yahoo.com or 989-450-1375.  
Donations may be sent to North Country  
Cooperative Parish, c/o Good Shepherd UMC of  
the North,

149 W. Robinson Lake Rd. Roscommon, MI 48653

### **The Glow Community Center; Indian River**

The vision for GLOW is to serve the community by  
shining a light of HOPE by providing this welcoming  
space for all ages. The Glow impacts youth,  
provides space for Celebrate Recovery, senior  
activities and special events.

Contact: Please Call Kristi Ninke 231-238-8966  
or 231-290-1013, if you desire more information.  
Donations may be sent to GLOW-IRUMC,  
P.O. Box 457, Indian River, MI 49749

## **MICHIGAN CONFERENCE SPECIAL SUNDAYS**

**Golden Cross Sunday –  
May 16, 2021**

**Christian Education Sunday –  
August 22, 2021**

**Rural Life Sunday –  
September 12, 2021**

**Disability Awareness Sunday –  
October 17, 2021**







## STEP 3: National

Give to at least one U.S.A. General Advance Project, Red Bird Mission Project, or one of the listed Special Sundays (page 27).

### **U.S.A. General Advance Projects**

#### **MCCURDY MINISTRIES COMMUNITY CENTER** #581479

Sharing educational ministries to help students and families in Española, New Mexico, succeed in school and in life

#### **NATIONAL JUSTICE FOR OUR NEIGHBORS (NJFON)**

#901285

Creating a welcoming community by providing immigration legal services, education and advocacy

#### **SOCIETY OF ST. ANDREW**

#801600

Salvaging fresh produce to reduce hunger and improve health of people in greatest need across the US

*NOTE: "Homelessness in the U.S." and "Young Adult Mission Service Programs" are no longer active Advance projects. Please select another project to support.*

## Red Bird Mission General Advance Projects

### HENDERSON SETTLEMENT

#773365

Essential services to people in rural Appalachia

### RED BIRD CHRISTIAN SCHOOL

#773728

Education for K-12 in a Christian environment in rural Appalachia

### RED BIRD CLINIC COMMUNITY HEALTH CENTER

#773724

Providing health programs for low-income underinsured and uninsured people in remote mountain areas

### RED BIRD MISSION

#773726

Empowering and advocating justice through spiritual, educational, health and outreach ministries. Giving to this project includes Smallwoods' missionary support.

## LIST OF SPECIAL SUNDAYS

### Human Relations Day

January 17, 2021

### Peace with Justice Sunday

June 7, 2020 & May 30, 2021

### Native American Ministries

April 18, 2021

### United Methodist Student Day

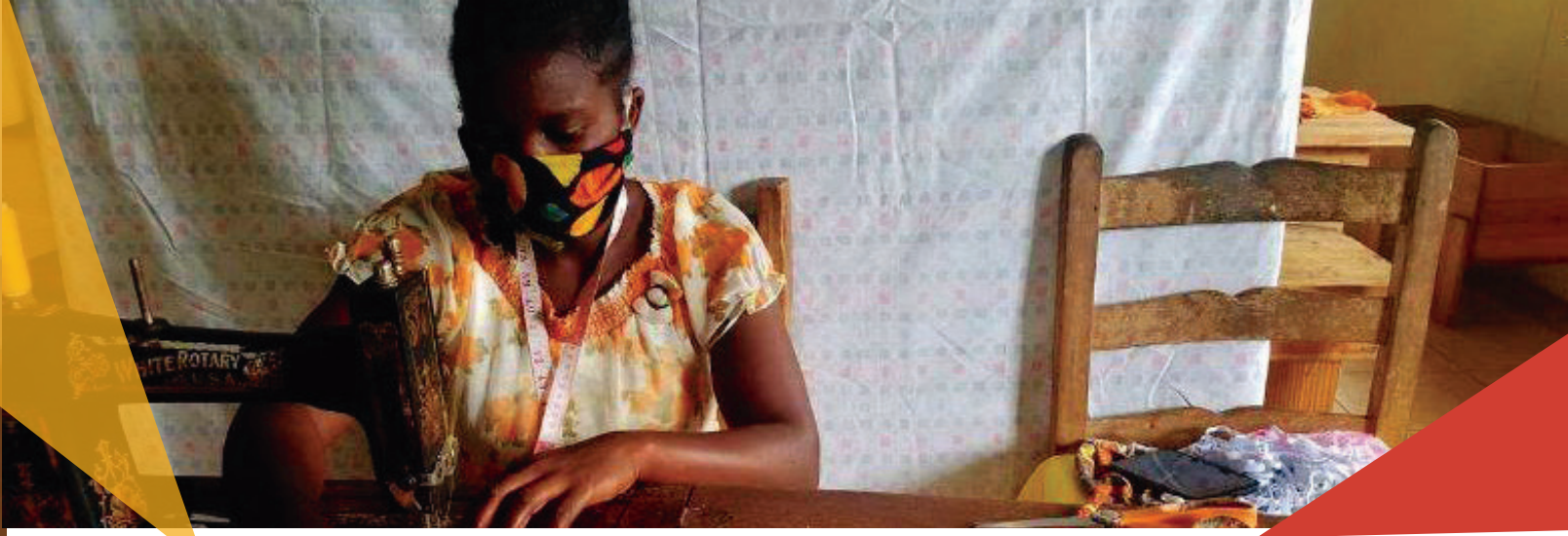
November 29, 2020 & November 28, 2021



For more information about Special Sundays of The United Methodist Church, visit [umgiving.org](http://umgiving.org).

For a complete list of General Advance Projects, visit [umcmmission.org](http://umcmmission.org)





## STEP 4: International

Give to at least one International General Advance Project or Special Sunday, at least one Haiti General Advance Project and at least one Liberia General Advance Project

### **International General Advance Projects**

#### **EURASIA IN MISSION TOGETHER – RUSSIA & BELARUS**

#11510A

Funding pastors' salaries and church ministries, and establishing new churches. Related Mission Personnel: Hyo-Won Park

#### **MUJILA FALLS AGRICULTURAL PROJECT**

#15016A

Addressing hunger and poverty with sustainable agriculture and leadership training in Zambia, Africa. Related Mission Personnel: Tkemba Nkomozepe

#### **NEW LIFE CENTER ZAMBIA**

#21550

Ministering through projects such as PET handicap bike, educational classes and community health in Zambia, Africa. Related Mission Personnel: Delbert Groves & Sandra Groves

#### **AMITY PRINTING PRESS – BIBLES AND CHRISTIAN LITERATURE**

#11422A

Providing free ethnic minority language Bibles for ethnic minority Christians

#### **BABYFOLD AT OLD MUTARE FAIRFIELD CHILDREN'S HOME**

#11713T

Caring for abandoned children by providing love, clothing, food and education

#### **CHURCH WORLD SERVICE BLANKETS & TOOLS PROGRAM**

#982810

Providing congregations the resources to support disaster response and rights-based community development projects in communities around the world

## CHURCH WORLD SERVICE CROP HUNGER WALK

#982380

Providing assistance for hungry people

## FOOD RESOURCES BANK

#982493

Alleviating world hunger by supporting smallholder agricultural programs

## HEIFER INTERNATIONAL: LIVING GIFTS

#98253

Working with communities to end hunger and poverty

## LORD'S MOUNTAIN ORPHANAGE

#14420T

Providing children with stability by meeting their needs physically, socially and spiritually in Zambia.

## MULUNGWISHI THEOLOGICAL SEMINARY

#05773A

Developing and educating national clergy persons in Democratic Republic of the Congo

## PAPA'S MINISTRIES

#3021286

Equipping local church with leadership development and mission training for sustainable outreach

## WORLD HUNGER AND POVERTY

#982920

Empowering families and communities to create self-help and sustainable solutions to food insecurity

## Special Sundays

World Communion Sunday,  
October 4, 2020 and October 3, 2021

### Africa University Day

(date chosen by the congregation)

Africa University empowers the students to leave the university skilled in their fields and with a desire to contribute to their nations.

For more information about Special Sundays of The United Methodist Church, visit

[umcgiving.org](http://umcgiving.org).

---

Learn more about the Michigan United Methodists' covenant relationship with Haiti Methodist:  
<https://michiganumc.org/michigan-supports-schools-in-haiti/>

## Haiti General Advance Projects:

### GRACE CHILDREN'S HOSPITAL & PEDIATRIC CLINIC

#418520

Caring for and creating hope for children and families suffering from TB, HIV/AIDS, chronic illness

### HAITI CHILDREN PROJECT

#3020507

Providing a Christian home to homeless children

### HAITIAN ASSETS FOR PEACE INTERNATIONAL

#3020490

Transforming Haiti through the empowerment and advocacy of women

For more information about Special Sundays of The United Methodist Church, visit [umcgiving.org](http://umcgiving.org). For a complete list of General Advance Projects, visit [umcmmission.org](http://umcmmission.org)



Learn more about the Michigan United Methodists' covenant relationship with Liberia United Methodists: <https://michiganumc.org/missions/ministry-partners/liberia-task-force/>

### **Liberia General Advance Projects:**

#### **BISHOP JUDITH CRAIG CHILDREN VILLAGE**

#11820A

Providing basic needs, education, counseling and healthcare to orphaned children

#### **BRIGHTER FUTURE CHILDREN RESCUE CENTER**

#3020790

Helping ex-child soldiers, prostitutes, rural teen mothers and poor children build better lives

#### **GANTA UNITED METHODIST HOSPITAL**

#15080N

Providing quality and affordable healthcare in the rural north of Liberia

#### **GANTA UNITED METHODIST MISSION STATION PROGRAM SUPPORT**

#14369T

Educating the community on agriculture sustainability

#### **OPERATION CLASSROOM – LIBERIA**

#3020494

Improving secondary education through partnership with The United Methodist Church in Liberia

#### **PASTOR AND DISTRICT SUPERINTENDENT SALARY SUPPORT**

#15124A

Improving substandard living conditions and preventing a shortage of pastors by supplementing income.

#### **UNITED METHODIST RURAL AND AGRICULTURE DEVELOPMENT PROGRAM (UMRADP)**

#15070A

Revitalizing and commercializing all United Methodist Agricultural infrastructures

#### **WATER FOR LIFE**

#3020811

Constructing wells to provide clean water and toilets to improve the living standards in communities

# STEP 5: Give to Mission Personnel

Give support to at least one Mission Personnel:

## MISSION PERSONNEL WITHIN THE MICHIGAN ANNUAL CONFERENCE



### RANDY HILDEBRANT

**ADVANCE #982961**

*CHURCH & COMMUNITY WORKER*

*God's Country Cooperative Parish, Newberry, MI*

Randy Hildebrant is a Church and Community Worker and assigned to God's Country Cooperative Parish in the Michigan Conference. Randy has served as a Church and Community worker for 13 years, serving the Rural Revitalization Project of the Elkhorn Valley District in the Nebraska Conference and the Jubilee Project, an Appalachian ministry based in Sneedville, Tennessee in the Holston Annual Conference. He has a strong commitment to rural ministry and a commitment to bring self-esteem, hope and faith to all God's children throughout the vast parish.

## GLOBAL MISSION FELLOWS

*The Global Mission Fellows program (formerly the US-2 program) takes young adults ages 20-30 out of their home environments and places them in new contexts for a two-year mission experience. The program has a strong emphasis on faith and justice. For more information visit: <https://www.umcmision.org/serve-with-us/global-mission-fellows/become-a-global-mission-fellows> or contact Lisa Batten ([lbatten@michiganumc.org](mailto:lbatten@michiganumc.org)).*



### MICHAEL BENNETT

**ADVANCE # 3022617**

*GLOBAL MISSION FELLOW (2020-2021)*

*Wesley Foundation of Kalamazoo, Kalamazoo*

Michael W. Bennett III is a Global Mission Fellow with the United Methodist General Board of Global Ministries, engaged in a two-year term of service. He was commissioned in August 2020. Michael is from Lakeland, Florida. He is a member of the Wesley Fellowship of Florida Southern College, Lakeland, in the Florida Annual Conference. "A crucial part to responding to this call to mission," he said, "was that this was act of faith and service rather than a last resort that I was forced to accept. I was not going to go into ministry because I wanted to but because my faith called me to. No matter where God sends me, God's will, still being perfect, will be done."





## LAUREN NORTON

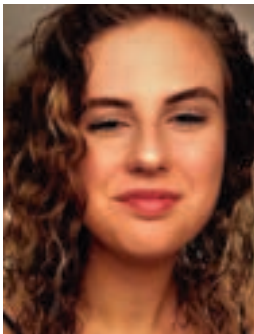
**ADVANCE #3022515**

*GLOBAL MISSION FELLOW (2019-2021)*

Lauren Elizabeth Norton is a Global Mission Fellow with the United Methodist General Board of Global Ministries, engaged in a two-year term of service. She was commissioned on Aug. 23, 2019.

Born in Conyers, Georgia, Lauren is a member of Carrollton First United Methodist Church, North Georgia Annual Conference.

Active in church since eighth grade, Lauren said, "My faith truly kicked off during my sophomore year of college. Becoming involved in a local church taught me that life was never meant to be about me. It is about serving others."



## EMILY PALM

**ADVANCE #3022618**

*GLOBAL MISSION FELLOW (2020-2022)*

*NOAH Project, Detroit*

Emily K. Palm is a Global Mission Fellow with the United Methodist General Board of Global Ministries, engaged in a two-year term of service. She was commissioned in August 2020. Emily is from Rockford, Illinois. She is a lifelong member of Christ United Methodist Church, Rockford, in the Northern Illinois Annual Conference. "I am passionate about missions and helping people in need," Emily said. "I have experience working with youth and at-risk populations, as well as extensive mission work. When faced with stress or adversity, I have learned to use mindfulness, meditation and prayer, which have helped me to take care of myself better and, ultimately, become a better leader."



## KATHRYN A. SAPPINGTON

**ADVANCE #3022516**

*GLOBAL MISSION FELLOW/US-2 (2019-2021)*

*First United Methodist Church in Kalamazoo, MI*

Kathryn Anne Sappington is a Global Mission Fellow with the United Methodist General Board of Global Ministries, engaged in a two-year term of service. She was commissioned on Aug. 23, 2019.

Born in Tupelo, Mississippi, Kathryn is a member of Rolling Fork United Methodist Church, Mississippi Annual Conference.

Volunteering for community-outreach programs as a child and youth, Kathryn didn't realize God was leading her into the future. "I thought I was just having fun," she admitted. "Recently, I was praying about my future and pleading with God to show me what to do."



## YEO JIN YUN

**ADVANCE #3022513**

*GLOBAL MISSION FELLOW (2019-2021)*

*Methodist Federation for Social Action (MFSA) in Detroit, MI*

Yeo Jin Yun is a Global Mission Fellow with the United Methodist General Board of Global Ministries, engaged in a two-year term of service. She was commissioned on Aug. 23, 2019.

Born in South Korea, Yeo Jin is a member of Grace-Bethel United Methodist Church, Leonia, New Jersey, Greater New Jersey Annual Conference.

Feeling unhappy and unfulfilled in her job after college, Yeo Jin had an opportunity to attend the 2018 United Methodist Women's Assembly. "During those days in Columbus, Ohio," she said, "I was instilled with a desire to live boldly for God. My heart undeniably heard the call. A month later, I resigned and began my application for Global Mission Fellows. Now, I'm filled with an uncharacteristically high amount of confidence and a genuine excitement for what God has in store for me."

## MISSION PERSONNEL BEYOND THE MICHIGAN ANNUAL CONFERENCE AFRICA



## DELBERT GROVES

**ADVANCE #12150Z**

and

## SANDRA GROVES

**ADVANCE #12151Z**

Delbert and Sandy Groves are missionaries with the General Board of Global Ministries based in Kitwe, Zambia since 2000. They serve at the New Life Center. The center, established in 2001 through Delbert and Sandy's efforts, has grown into a resource for the young United Methodist Provisional Conference of Zambia. It has numerous outreach ministries, including New Life Press, health education, PET Zambia (handicap bikes for mobility), a learning and computer lab, English instruction, instruction in new church construction, and other training ministries. Additional information is available online at [www.NewLifeZambia.com](http://www.NewLifeZambia.com). The couple also hosts volunteer-in-mission work teams.



## DAVID PAYE GUINKPA

**ADVANCE # 15089Z**

David Guinkpa is a missionary with the General Board of Global Ministries of The United Methodist Church serving as Interim Treasurer Liberia Annual Conference/ Interim Financial Officer in Liberia & Nigeria. Mission finance auditors work with church leaders, mission partners and institutions, and Global Ministries personnel in ensuring that funds are distributed and utilized in appropriate ways. Commissioned as a missionary in 2007, Mr. Guinkpa formerly worked in mission finance in Uganda.



## **PRINCESS JUSU**

**ADVANCE #13037Z**

Princess M. Jusu is a missionary with the Board of Global Ministries of The United Methodist Church serving in Monrovia, Liberia, as an instructor at the United Methodist Women's Leadership Training Center. Mrs. Jusu's ministry includes teaching skills which entail tailoring, tie-dying, knitting and home economics for women and girls who, for various reasons, have dropped out of school. Princess also assists with the village health outreach program for women.



## **EMMANUEL UFONNA MEFOR**

**ADVANCE #13990Z**

and

## **FLORENCE OGUGUA MEFOR**

**ADVANCE #13991Z**

Dr. Emmanuel Ufonna Mefor, a medical doctor, and Florence Ogugua Mefor, a nurse and mid-wife, are missionaries with the Board of Global Ministries of The United Methodist Church currently assigned to Mutambara, Zimbabwe.



## **HELEN ROBERTS-EVANS**

**ADVANCE #3021129**

Helen Roberts-Evans is a missionary of the General Board of Global Ministries of The United Methodist Church, serving as director of the Department of General Education and Ministry of the United Methodist Church in Liberia. Helen's work includes meeting needs in such areas as teacher training, scholarships, resources, new school construction, and school building renovation and repair. "I want to share the love of Christ with each child because I know that His love brings peace and gives strength to overcome life's challenges."



## **TEMBA NKOMOZEPE**

**ADVANCE #3022400**

Temba Nkomozepe is a missionary with the United Methodist General Board of Global Ministries serving as an agriculturalist at Mujila Falls Agriculture Center in Kanyama, Zambia. He was commissioned in October 2017. Temba takes part in a range of agricultural, education, and health projects, as well as church growth and development. Mujila Falls raises essential crops, such as corn, and engages in small animal husbandry, cattle and goat milking, fruit culture, tree nurseries, fish culture, and research.

## ASIA



### CHIN H. CHO

**ADVANCE #3022047**

Chin Cho is a missionary with the General Board of Global Ministries serving as the coordinator of the United Methodist Mission in Mongolia, based in Ulaanbaatar. He was commissioned in June 2015. As the country coordinator, Chin oversees the several aspects of ministry, working with local Mongolian United Methodist leaders and other missionaries. He engages in the training of indigenous clergy, who study at the Mongolia Trinity Bible College, where he teaches Wesleyan studies.



### DEBORAH DORNON

**ADVANCE #10920Z**

and

### LESTER DORNON

**ADVANCE #10919Z**

Deborah Dornon and Lester Dornon, M.D., are missionaries with the General Board of Global Ministries, Tansen Hospital in western Nepal in Asia. Deborah is assigned as coordinator of expatriate services at the hospital. Lester is assigned as senior physician at the hospital. Lester and Deborah returned to Nepal and Tansen as missionaries in mid-2012, having served there from 1990 to 2002. The hospital in Tansen is related to the United Mission to Nepal, established in 1954 as a partnership between the people of Nepal and a coalition of 20 Christian organizations on four continents.



### HYO-WON PARK

**ADVANCE # 3021822**

The Rev. Hyo-Won Park is a missionary with the General Board of Global Ministries serving as a new church planter in St. Petersburg, Russia. He was commissioned in June 2013. Familiar with the area from time previously spent there, Rev. Park is working with the leadership of the St. Petersburg District in identifying opportunities for new congregations. Methodism returned to St. Petersburg, where it had existed prior to the Communist Revolution, with the dissolution of the Soviet Union almost 25 years ago. Likely constituents for new churches are the young people who come to the city looking for jobs and educational opportunities.



### ADAM SHAW

**ADVANCE # 3021347**

Adam Shaw is a missionary with the General Board of Global Ministries of The United Methodist Church serving as the International Linkages Coordinator for Korea at the Asia Pacific Regional Office, based in Seoul, South Korea. In light of the continuing Korean Conflict, he works with various churches and community organizations to further efforts for justice and peace, to seek ways toward community and healing, and build national networks to better understand each other.

## CENTRAL AMERICA



### JOSÉ ROBERTO PEÑA

**ADVANCE # 14026Z**

The Rev. José Roberto Peña-Nazario is a missionary with the General Board of Global Ministries of The United Methodist Church assigned as Pastorate, United Methodist Mission in Honduras. He also has pastoral responsibilities at Danli Central United Methodist Church. As a pastor, José is responsible for developing new churches, bringing new members into the Christian community, developing leadership, and assisting people in the community to improve their living conditions.



### MBWIZU NDJUNGU

**ADVANCE #12909Z**

and

### NKEMBA NDJUNGU

**ADVANCE #12910Z**

Mbwizu and the Rev. Nkemba Ndjungu are missionaries with the General Board of Global Ministries assigned to The Methodist Church of Belize. Nkemba supervises the work in the Stan Creek Circuit and Mbwizu serves as Director of Christian Education.

## NORTH AMERICA



### PAUL LEE WEBSTER

**ADVANCE #11865Z**

Paul Webster has served as an agricultural specialist at Mujila Falls Centre in Zambia since 2000. He now returns to his home in Wisconsin as a "Mission Advocate" for agricultural missionaries deployed by the General Board of Global Ministries.

**For a complete list of Global Ministries Mission Personnel, visit [umcmmission.org](http://umcmmission.org). Congregations are also encouraged, but not required, to become a "Covenant Partner with a Mission Personnel." To learn visit [umcmmission.org/covenantpartnerships](http://umcmmission.org/covenantpartnerships). The covenant form is on the next page.**



The Advance Covenant Relationship Form

Type of Covenant Relationship: (check one)

Church (\$2,500 or \$5/member) Individual (\$500) Other (\$5/member, e.g., Youth Group, Campus Ministry)

Total Commitment Amount Per Year: \$ \_\_\_\_\_ (required)

Length of Covenant Relationship commitment: 3 years 1 year Indefinite

Beginning: \_\_\_\_\_ Ending: \_\_\_\_\_  
Month / Year Month / Year

NOTE: It is only necessary to renew your acceptance form at the end of your commitment.

Missionary: \_\_\_\_\_ Advance #: \_\_\_\_\_

Please indicate missionary previously supported (if different): \_\_\_\_\_

Please note that while your covenant is with the missionary above, your gift will support the entire missionary community.

Contact Information:

Name of Church/Individual/Group/Organization (to receive credit):

\_\_\_\_\_

Address: \_\_\_\_\_  
Street City State Postal Code

Telephone: \_\_\_\_\_ Email: \_\_\_\_\_

Church Information: (if applicable)

Name: \_\_\_\_\_

Pastor: \_\_\_\_\_ Annual Conference: \_\_\_\_\_ District: \_\_\_\_\_

Contact Person: (if applicable)

Name: \_\_\_\_\_

Address: \_\_\_\_\_  
Street City State Postal Code

Telephone: \_\_\_\_\_ Email: \_\_\_\_\_

• Send form to: The Advance, General Board of Global Ministries, 458 Ponce de Leon Avenue NE, Atlanta, GA 30308

Tel: 404-460-7945, Fax: 404-942-4241, Email: covenant@umcmmission.org

• For church credit, send financial support to your conference treasurer or to the Advance GCFA. For individual/group/organization credit, send gifts directly to Advance GCFA. Please clearly designate the missionary's Advance number. Mail gifts to:

Advance GCFA  
PO Box 9068  
New York, NY 10087-9068

www.umcmmission.org/covenantrelationships





# STEP 6: UMCOR

Give to at least one United Methodist Committee on Relief ( UMCOR) General Advance Project or UMCOR Sunday:

## **UMCOR Disaster Response Projects**

### **DISASTER RESPONSE INTERNATIONAL**

**#982450**

Responding quickly to meet emergency needs around the world

### **DISASTER RESPONSE UNITED STATES**

**#901670**

Supporting UMCOR's response to disasters

## **UMCOR Projects**

### **GLOBAL REFUGEE**

**#3022144**

Addressing the global refugee and migration crisis

### **SOLAR OVEN PROJECT**

**#418812**

Empowering people to use solar energy to meet their cooking needs.

### **UMCOR GLOBAL HEALTH**

**#3021770**

Increasing access to health interventions in economically vulnerable communities

### **UMCOR WATER, SANITATION & HYGIENE PROGRAM**

**#3020600**

Supporting communities to meet their needs for clean water, sanitation, and hygiene around the world

### **UMCOR – WHERE MOST NEEDED**

**#999895**

Supporting programs that fight hunger and poverty, assist the displaced, and respond to disasters





# ACT

## Goal:

**Congregation engages in at least one hands-on action that:**

- Intentionally honors the sacred dignity and intrinsic worth of every person who participates in the missions and ministries of your congregation
- Builds relationships with a local, national, or international community
- Addresses root causes of systemic injustice

## ENGAGING MISSION IN A TIME OF PANDEMIC

Even during the current pandemic and institutional uncertainty, God's presence and call to mission remain steadfast. Now is not the time to withdraw; now is the time to review, re-imagine and pray our way to new approaches for engagement in mission.

Given current restrictions on in-person gatherings, **Engage<sup>mi</sup>** encourages congregations to use Learn-Give-Act steps as Spirit-led catalysts for prayerful, playful, creative conversations and ministries that are unique to your faith community.

### **Suggestions to get started:**

- Gather a diverse group – not only the Missions Team - for a Zoom conversation about **Engage<sup>mi</sup>** (be sure to include youth)
- Prior to the conversation, ask participants to read at least pages 1-10 of the **Engage<sup>mi</sup>** program book
- During the Zoom meeting, pray, think, imagine and talk about what excites the group and how Learn-Give-Act goals might be adapted to life during the pandemic

### **Act examples:**

- Collect items to donate to local shelters via a safe drop-off at the church or someone's home
- Visit <https://umvimncj.org/project-listings/virtual-missions/> for a list of virtual missions
- Make friendly phone calls to persons who may live alone or who were home-bound prior to the pandemic
- Have a few people visit UMC's Abundant Health initiative website for ideas about how to improve health in mind-body-spirit at home and across the world <https://umcabundanthealth.org/>

Be creative, be joyful in Christ, stay connected, and become an **Engage<sup>mi</sup>** congregation!

**Below are suggested resources. More information can be found at [www.michiganumc.org/mission/engage-mi/act](http://www.michiganumc.org/mission/engage-mi/act)**

## ACT THROUGH UNITED METHODIST VOLUNTEERS IN MISSION

United Methodist Volunteers In Mission (UMVIM) is a grassroots movement within The United Methodist Church designed to provide an official channel whereby Christians, both lay and clergy, may offer their skills and talents for Christian service at home and around the world on short term assignments at their own expense.

[www.umcmmission.org/serve-with-us/umvim](http://www.umcmmission.org/serve-with-us/umvim)

## UMVIM LOCATIONS IN MICHIGAN

Cass Community Social Services, Detroit  
<https://casscommunity.org/>

God's Country Cooperative Parish, Newberry  
<https://www.facebook.com/Gods-Country-Cooperative-Parish-129351389090/>

Motown Mission, Detroit <http://motownmission.org/>

For More Information About UMVIM please contact Jody Pratt, Michigan Conference UMVIM Coordinator, [prattjji09@gmail.com](mailto:prattjji09@gmail.com)



## **ACT THROUGH MICHIGAN CONFERENCE DISASTER RESPONSE & RECOVERY**

Find ways your congregation can be in ministry with communities effected by disaster.

<https://michiganumc.org/missions/disaster-response/>

## **ACT THROUGH THE MICHIGAN CONFERENCE COVENANTS WITH HAITI AND LIBERIA**

Find ways your congregation can be in ministry with the people of the Methodist Church of Haiti and the Liberia Annual Conference of The United Methodist Church.

Michigan Haiti Covenant Partnership:

The Rev. Karl Zeigler

Liberia Ministry Partnership:

The Rev. Jon Reynolds

## **ACT THROUGH MICHIGAN CONFERENCE OR DISTRICT PROJECTS**

Contact one of our Conference or District Projects to find out how your congregation can partner and be in "ministry with."

<https://michiganumc.org/missions/ministry-partners/step-2-michigan/>

## **ACT BY PLANNING AN "UBUNTU DAY OF SERVICE" IN YOUR COMMUNITY**

Download a planning kit at <https://michiganumc.org/wp-content/uploads/2020/08/ubuntutoolkitweb.pdf>

## **ACT THROUGH FAITHFUL CIVIC ENGAGEMENT**

"Creating Change Together: A Toolkit for Faithful Civic Engagement"

<https://www.umcjustice.org/news-and-stories/creating-change-together-801>

# Engage<sup>mi</sup> MICHIGAN CONFERENCE CONTACTS

## **BOARD OF GLOBAL MINISTRIES**

Brenda DuPree, Chairperson  
bkdupree@comcast.net  
248-202-4746

The Rev. Julie Elmore, Conference  
Secretary of Global Ministries  
jyelmore@gmail.com  
517-607-6977

Laurie Kaufman de la Garza,  
Advance & Engage<sup>mi</sup>  
laurie.kdlg69@gmail.com  
906-428-4623

## **BOARD OF JUSTICE**

The Rev. George Covintree, Chairperson  
georgecovintree@me.com  
248-943-0534

George Jonte-Crane, Conference  
Peace with Justice Coordinator  
geopau226@yahoo.com

## **DISASTER RESPONSE & RECOVERY**

The Rev. Robert Miller, Chairperson  
pastorbobmiller@comcast.net  
810-623-0958

Dan O'Malley, Conference Disaster  
Response Coordinator  
dano.omalley@gmail.com  
616-915-6301

## **LIBERIA MINISTRY PARTNERSHIP**

The Rev. Jon Reynolds, Chairperson  
jon@brightonfumc.org

## **MICHIGAN-HAITI COVENANT MINISTRY PARTNERSHIP**

The Rev. Karl Zeigler, Chairperson  
zeigler.karl@yahoo.com  
248-904-8816

## Engage<sup>mi</sup> **QUESTIONS?**

Paul Perez, Director of  
Connectional Ministry  
pperez@michiganumc.org  
517-347-4030 ext. 4070



## HOW DOES MY CONGREGATION SUBMIT FUNDS FOR Engage<sup>mi</sup>

### **DISTRICT PROJECTS**

Please submit funds for Engage<sup>mi</sup> District CCMM Projects directly to the district project as listed in the Engage<sup>mi</sup> book or on the "Mission" section of each District website.

### **CONFERENCE PROJECTS**

Please submit funds for Engage<sup>mi</sup> Conference CCMM Projects, Global Ministries Advance Projects, Global Ministries Mission personnel, and Special Sundays with your monthly Ministry Share payment using the Ministry Share Remittance Form.

#### **Questions? Contact:**

Rich Pittenger, Michigan Conference UMC. Accounts Receivable Clerk  
Michigan Conference Center North  
1161 E. Clark Rd., Ste. 212, DeWitt, MI 48820  
(517) 347-4030 ext. 4134 | [rpittenger@michiganumc.org](mailto:rpittenger@michiganumc.org)



## Annual Report

To become an **Engage<sup>mi</sup>** Congregation, please share how you learned, gave and acted last year by submitting the following report. **Reports are due by January 10, 2021.**

Please submit to [engagemichiganumc.org](mailto:engagemichiganumc.org). Questions? Paul Perez (517-347-4030 ext. 4070) or Laurie de la Garza (906-428-4623). Please do not submit funds with this report. See instructions for how to submit funds in the **Engage<sup>mi</sup>** book.

Church \_\_\_\_\_

District \_\_\_\_\_

Address \_\_\_\_\_

City \_\_\_\_\_ Zip \_\_\_\_\_

Phone \_\_\_\_\_ Fax \_\_\_\_\_

Email \_\_\_\_\_

Mission Chair/Staff person/Contact Person \_\_\_\_\_

Phone \_\_\_\_\_ Fax \_\_\_\_\_

Email \_\_\_\_\_

Address \_\_\_\_\_

City \_\_\_\_\_ Zip \_\_\_\_\_

Tell us about your stories of mission! Please attach a separate sheet with your LEARN and ACT stories typed in 100 words or less for each category.

### LEARN

In telling your **Engage<sup>mi</sup>** story, it may help to consider some of these points:

- what was LEARNed and who did the LEARNING
- what was the LEARNING process
- was "ministry with" LEARNING enhanced
- your LEARNING about causes of injustice

### ACT

In telling your **Engage<sup>mi</sup>** story, it may help to consider some of these points:

- what ACTION you did and who did the ACTION
- how your "ministry with" ACTION is furthering relationships
- how your ACTION may be developing long-term solutions to issues
- how your ACTION honored the dignity of all those involved
- how you ACTed to address causes of injustice

**GIVE:** Use this form to report your giving. Please list clearly all names, numbers, and amounts of the projects and Mission Personnel.

<b>Step 1: 100% of Michigan Conference Ministry Shares</b>		
	Give 100% of Michigan Conference Ministry Shares	\$
<b>Step 2: Michigan</b>		
	Give to at least one Conference Project or qualifying Special Sunday (Please list the project(s) name, CCMM#, amount and/or the Special Sunday and amount.) Pages 15-21.	<b>CCMM#</b> \$
	Give to at least one District Project (Please list project(s) name and amount). Pages 21-24.	\$
<b>Step 3: National</b>		
	Give to at least one U.S.A. General Advance Project, Red Bird Mission General Advance Project, or qualifying Special Sunday (Please list the project(s) name, Advance#, amount and/or the Special Sunday and amount.) Pages 26-27.	<b>Advance#</b> \$
<b>Step 4: International</b>		
	Give to at least one International General Advance Project or qualifying Special Sunday (Please list the project(s) name, number, amount or Special Sunday and amount.) Pages 29-31.	<b>Advance#</b> \$
	Give to at least one Haiti General Advance Project (Please list the project(s) name, Advance#, amount). Or Annual Conference Offering can be recorded here. Page 30.	<b>Advance#</b> \$
	Give to at least one Liberia General Advance Project (Please list the project(s) name, Advance#, amount.) Or Annual Conference Offering can be recorded here. Page 31.	<b>Advance#</b> \$
<b>Step 5: Mission Personnel</b>		
	Give to at least one Mission Personnel (Please list Mission Personnel(s) name, Advance#, amount.) Page 32-39.	<b>Advance#</b> \$
<b>Step 6: United Methodist Committee on Relief (UMCOR)</b>		
	Give to at least one UMCOR Disaster Response Project, UMCOR Project or UMCOR Sunday (Please list project(s) name, number, amount, and/or UMCOR Sunday and amount.) Pages 40-41.	<b>Advance#</b> \$



# Michigan Conference

The United Methodist Church